



Registrar of Voters

11-Day Vote Center
Open October 28 to November 7

4-Day Vote Centers
Open November 4 to November 7

All Vote Centers
Open Election Day, November 7
7:00 a.m. to 8:00 p.m.

Check Vote Center
Locations and Hours
at www.voteinfo.net

.....
Registration Deadline

October 23, 2023
.....

Quick • Easy • Convenient

This election, every active registered voter will automatically receive a Vote-by-Mail ballot in the mail.

Additional Information Inside
.....

Request Language Assistance

Submit form on Back Cover to receive election material translated in available selected languages.

AVISO IMPORTANTE

Una traducción en Español de esta Guía de Información del Condado Para el Votante puede obtenerse en la oficina del Registro de Votantes llamando al (951) 486- 7200 o (800) 773-VOTE (8683) o visite nuestro sitio web www.voteinfo.net

City of Perris Special Measure Election

*Tuesday, November 7, 2023
County Voter Information Guide*



COUNTY OF RIVERSIDE REGISTRAR OF VOTERS
2720 Gateway Drive, Riverside, CA 92507-0918
(951) 486-7200 • (800) 773-VOTE (8683) • California Relay Service (Dial 711)
Mailing Address: 2724 Gateway Drive, Riverside, CA 92507-0918
www.voteinfo.net

THIS ELECTION VOTING IS DIFFERENT



VOTE-BY-MAIL

Vote at home using your Vote-By-Mail ballot

No Postage Required

Quick, easy, convenient...

from the comfort of your home!

OR

BALLOT DROP-OFF LOCATION

at the Registrar of Voters Office or at a Ballot Drop-Off location in the City of Perris

No Postage Required

See inside...

for a list of Drop-Off locations and hours of operation in Riverside County!



OR

VOTE CENTERS

Beat the lines and vote early in-person at any of the 11-day or 4-day Vote Centers in the City of Perris, including Election Day.

Election Day, November 7, 7:00 a.m. to 8:00 p.m.

See inside...

for Vote Center locations and hours of operation in Riverside County!

For more information visit www.voteinfo.net
or call (951) 486-7200 or (800) 773-VOTE (8683)



REGISTRAR OF VOTERS

COUNTY OF RIVERSIDE

Dear Riverside County Voter,

Election Day is November 7, 2023. This County Voter Information Guide provides ballot marking instructions, measure information and other important election information that you should review before you vote. You may mark your selections on your Sample Ballot and take it with you to any Vote Center for easy reference. Each eligible registered voter for the November 7, 2023, City of Perris Special Measure Election will receive a ballot by mail beginning Tuesday, October 10, 2023.

Voters can verify their voter registration at voterstatus.sos.ca.gov or register to vote at registertovote.ca.gov.

- Your Vote-by-Mail ballot may be returned at any secure Ballot Drop-off location that will be available beginning October 10, 2023, or via USPS (no postage required).
- You may drop off your voted ballot at any designated Ballot Drop-off location or Vote Center in Riverside County before Election Day. Please visit www.voteinfo.net for a list of participating locations and hours, or you may call our office at the numbers listed.
- For your ballot to count, it must be in the possession of the Riverside County Registrar of Voters or an elections official at any Vote Center, Ballot Drop-off location, or Polling Place within the state by the close of polls on Election Day, November 7, 2023. Your ballot will also count if it is postmarked on or before Election Day and received no later than seven days after Election Day.
- You may track your ballot by registering at WheresMyBallot.sos.ca.gov.

All Vote Centers, including the Registrar of Voters office, will be open on Election Day, November 7, from 7:00 a.m. to 8:00 p.m. Please feel free to contact the Riverside County Registrar of Voters at (951) 486-7200 with any questions or concerns regarding the upcoming November 7, 2023, City of Perris Special Measure Election.

Thank you for your continued participation and support in making democracy work.

Sincerely,

Registrar of Voters Office

VOTE CENTER LOCATIONS

Bob Glass Gym
Community Room
101 North D Street
Perris, CA 92570
October 28 – November 6
9:00 a.m. to 5:00 p.m.
Election Day, November 7
7:00 a.m. to 8:00 p.m.

Perris DPSS
Classrooms 106 & 107
201 Redlands Avenue
Perris, CA 92571
November 4 – November 6
9:00 a.m. to 5:00 p.m.
Election Day, November 7
7:00 a.m. to 8:00 p.m.

Riverside County Registrar of Voters
2720 Gateway Drive
Riverside, CA 92507
October 10 – November 6
Monday – Friday (excluding Holidays)
8:00 a.m. to 5:00 p.m.
October 28 – October 29
9:00 a.m. to 5:00 p.m.
November 4 – November 5
9:00 a.m. to 5:00 p.m.
Election Day, November 7
7:00 a.m. to 8:00 p.m.

May Ranch Elementary School
Library
900 E Morgan Street
Perris, CA 92571
November 4 – November 6
9:00 a.m. to 5:00 p.m.
Election Day, November 7
7:00 a.m. to 8:00 p.m.

Calvary Chapel Perris Valley
Rooms 3 - 5
3060 Barrett Avenue
Perris, CA 92571
November 4 – November 6
9:00 a.m. to 5:00 p.m.
Election Day, November 7
7:00 a.m. to 8:00 p.m.

BALLOT DROP-OFF LOCATIONS

City of Perris
101 North D Street
Perris, CA 92570
During regular city business hours

Perris DPSS
201 Redlands Avenue
Perris, CA 92571
October 10 – November 3 (excluding Holidays)
Monday – Friday
10:00 a.m. to 3:00 p.m.

Riverside County Registrar of Voters
2720 Gateway Drive
Riverside, CA 92507
October 10 – November 3 (excluding Holidays)
Monday – Friday
Secure drop box 24 hours a day

Calvary Chapel Perris Valley
3060 Barrett Avenue
Perris, CA 92571
October 10 – November 3 (excluding Holidays)
Monday – Friday
10:00 a.m. to 3:00 p.m.

CAN'T MAKE IT ON ELECTION DAY?
WE'RE MAKING IT EASY TO VOTE EARLY



**AT THE REGISTRAR OF VOTERS OFFICE
2720 Gateway Drive, Riverside, CA 92507**

**October 10 through November 6
Monday through Friday
8:00 a.m. to 5:00 p.m.**

**October 28 through October 29
9:00 a.m. to 5:00 p.m.**

**November 4 through November 5
9:00 a.m. to 5:00 p.m.**

**Election Day, November 7
7:00 a.m. to 8:00 p.m.**

VOTE-BY-MAIL

All eligible registered voters in Riverside County for the November 7, 2023, City of Perris Special Measure Election will receive a ballot by mail beginning Tuesday, October 10, 2023. Return your Vote-by-Mail ballot by mail or at the following locations:

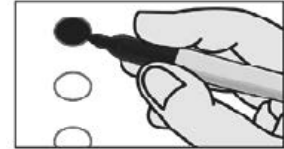
★ ★ ★ ★ ★	★ ★ ★ ★ ★	★ ★ ★ ★ ★
<p><u>Registrar of Voters</u></p> <p>2720 Gateway Drive Riverside, CA 92507</p> <p>October 10 – November 6 Monday - Friday 8:00 a.m. – 5:00 p.m.</p> <p>October 28 – October 29 9:00 a.m. to 5:00 p.m.</p> <p>November 4 – November 5 9:00 a.m. to 5:00 p.m.</p> <p>Election Day, November 7 7:00 a.m. – 8:00 p.m.</p>	<p><u>Ballot Drop-Off Locations</u></p> <p>October 10 – November 6 Dates, Locations, and Hours Vary</p> <p>All Drop-Off Locations Open Election Day, November 7 7:00 a.m. to 8:00 p.m.</p> <p>Registrar of Voters Secure drop box 24 hours a day</p> <p>See the list of locations and hours online at www.voteinfo.net</p>	<p><u>Vote Centers</u></p> <p>Dates, Locations, and Hours Vary</p> <p>11 - Day Vote Center Open October 28 to November 7</p> <p>4 - Day Voter Centers Open November 4 to November 7</p> <p>All Vote Centers Open Election Day, November 7 7:00 a.m. – 8:00 p.m.</p> <p>See the list of locations and hours online at www.voteinfo.net</p>

HOW TO MARK YOUR OFFICIAL PAPER BALLOT

Please refer to the following instructions on how to properly complete your Official Paper Ballot:

- Completely fill in the oval next to your choice like the example provided.
- Check both front and back of ballot for voting contests.
- Use a black ink pen or marker. Do not use red ink.
- Completely filling in the oval is preferred.
- Vote for no more than the number of votes allowed in each contest (e.g., vote for one, vote for no more than two, etc.).
- Please keep the Vote-by-Mail ballot folded the same way as you received it.

**TO MARK YOUR VOTE
FILL IN THE OVAL**



VOTE!!!

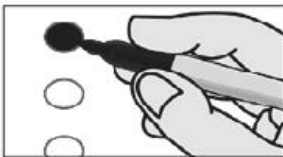
IMPORTANT NOTE!

You must fill out and sign the return envelope
for your Vote-by-Mail ballot to be counted.

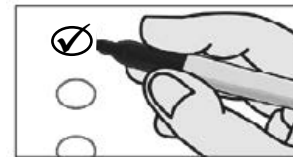
MAKE YOUR VOTE COUNT...MARK YOUR BALLOT CORRECTLY

EXAMPLE

CORRECT



INCORRECT



For a demonstration on marking your ballot, please visit our website at www.voteinfo.net

SAMPLE BALLOT / BOLETA DE MUESTRA

BT-1

CITY OF PERRIS SPECIAL MEASURE ELECTION
ELECCIÓN ESPECIAL DE MEDIDA DE LA CIUDAD DE PERRIS
November 7, 2023 / 7 de noviembre de 2023

Mark your choices on your sample ballot, then refer to it when you vote
Marque sus opciones en su boleta ejemplar, luego, refiérase a esta cuando esté votando



Instructions to Voters: To vote, completely fill in the oval next to your choice, like the example to the left. Use a black ink pen or marker to mark your ballot. DO NOT USE RED INK.

Instrucciones para los Votantes: Para votar, completamente rellene el óvalo junto a su deseo, como el ejemplo a la izquierda. Use un bolígrafo o marcador de tinta negra para marcar su boleta. NO USE TINTA ROJA.

MEASURE SUBMITTED TO THE VOTERS
MEDIDA SOMETIDA A LOS VOTANTES

CITY
CIUDAD

CITY OF PERRIS
CIUDAD DE PERRIS

A Shall the measure, establishing, for 30 years, an annual special business license tax of up to \$0.107 per square foot (subject to annual CPI adjustments) on distribution facilities, large truck storage businesses, and manufacturing businesses with large truck activity, annually collecting approximately \$4,019,315 to be used solely for construction, improvement, operation, maintenance, repair and/or restoration of Perris public streets, roadways, sidewalks, roadway lighting, storm drains, traffic signals or other public improvements, be adopted?

Supporters: Mayor Michael M. Vargas; Councilmember Malcolm Corona
Opponents: Devon Sulli, Executive Director, NAIOP-Inland Empire

A Debería la medida, que establece, durante 30 años, un impuesto anual especial a las licencias comerciales de hasta \$0.107 por pie cuadrado (sujeta a ajustes anuales de CPI) en las instalaciones de distribución, negocios de almacenamiento de camiones grandes y negocios de fabricación con actividad de camiones grandes, recaudando anualmente aproximadamente \$4,019,315, para ser utilizado únicamente para la construcción, mejoramiento, operación, mantenimiento, reparación y restauración de las vías públicas de Perris, caminos, aceras, iluminación vial, drenajes de desagüe, señales de tráfico u otras mejoras publicas, ser adoptada?

Partidarios: Alcalde Michael M. Vargas; Miembro del Concejo Malcolm Corona
Opositores: Devon Sulli, Director Ejecutivo, NAIOP-Inland Empire

YES / SÍ

NO / NO

END OF BALLOT / FINAL DE LA BOLETA

VOTER'S INFORMATION GUIDE SECTION

The following pages contain voter information applicable to your ballot which may include the following items:

- BALLOT MEASURE
- ANALYSIS
- ARGUMENTS IN SUPPORT & IN OPPOSITION

Statements made on the following pages represent the views of the authors and are not endorsed by the County of Riverside. Internet website addresses included in any statements are provided by the authors. The County of Riverside assumes no liability for the accuracy or content of websites listed therein.

Arguments in support of or in opposition to the ballot measures are opinions of the authors.

The text, grammar, and spelling are as submitted by the authors.

VOTE CENTER REMINDER NO ELECTIONEERING!



All electioneering, voter solicitation, etc. is prohibited within 100 feet in any direction of the room where voters are casting ballots at vote centers and ballot drop off locations.

Avoid wearing or displaying campaign buttons, hats, t-shirts, and other political items.

CALIFORNIA ELECTIONS CODE §§18370, 18371

IMPARTIAL ANALYSIS OF MEASURE "A"

The City Council placed Measure A on the November 7, 2023, ballot for consideration by City of Perris voters.

If approved, Measure A establishes an annual special business license tax that requires every person conducting the business of, operating, or managing a distribution facility or industrial business to pay an annual tax in the amount of up to \$0.107 per square foot for space principally utilized for distribution facility or industrial business purposes, as calculated by the Perris city manager. Beginning July 1, 2025, and every subsequent July 1, this tax rate would be adjusted by the percentage increase in the Consumer Price Index ("CPI"). If there is no change or there is a percentage decrease in CPI in any given year, then the tax would be unchanged, unless approved by the City Council. Measure A is estimated to collect \$4,019,315 annually. Revenue generated by this tax would be deposited into a separate fund and can only be spent on improvement, operation, maintenance, repair and/or restoration of Perris public roads, including truck routes, collector streets, and arterial streets as identified in the City of Perris General Plan Circulation Map and any City of Perris specific plan circulation maps. Measure A includes the following definitions:

"Distribution facility" means "a business consisting primarily of receiving, temporarily storing, and subsequently distributing goods, wares, or merchandise of any kind to wholesalers or retailers."

"Industrial business" means "a business consisting primarily of indoor or outdoor storage of large trucks or a business consisting primarily of indoor or outdoor manufacturing with large truck activity."

"Road" means "that portion of a street, highway, or other public right-of-way publicly maintained and open to the use of the public for purposes of vehicular travel."

"Large truck" means "a truck, tractor, trailer, or other vehicle exceeding a maximum gross weight limit of 5 tons."

This tax expires 30 years from its effective date and includes enforcement and accountability provisions. The City Council is able to make amendments, provided that the tax is not increased in a manner requiring voter approval. Regulations would be established to administer the tax, including collection, enforcement, penalties and refunds.

A "YES" vote on Measure A is a vote in favor of the annual special business license tax of up to \$0.107 per square foot upon distribution facilities and industrial businesses (as defined). A "NO" vote on Measure A is a vote against the annual special business license tax of up to \$0.107 per square foot upon distribution facilities and industrial businesses (as defined).

Measure A takes effect if approved by 2/3 of those voting at the November 7, 2023, special municipal election.

The above statement is an impartial analysis of Measure A. The text of Measure A is available on the City of Perris Website at <https://www.cityofperris.org/our-city/community-info/measure-a-business-license-tax> or you may contact the City Clerk's office at (951) 943-6100 and a copy will be mailed at no cost.

By: Robert Khuu, City Attorney
City of Perris

ARGUMENT IN FAVOR OF MEASURE "A"

Vote YES on A: help maintain our quality of life, improve city streets and keep Perris on the right track – without increasing taxes on local residents.

Our city continues to grow and thrive, but that growth has also meant more strain on our local streets and roads. The City has done all it can to keep our roads safe and maintained, but the increase in distribution facilities, warehouses, and industrial businesses has strained city public roads, impacting collector streets, arterial streets, and truck routes – and making it harder for residents to get around. That is why we need Measure A.

Measure A will provide dedicated funds to repair and maintain our roads for the safety of Perris residents. Measure A will set an annual business license tax on distribution facilities, warehouses, and industrial businesses with significant truck activity. The rate is fair and will not exceed \$.107 per square foot, with an annual CPI adjustment.

Measure A - a simple fix provides real results. Measure A will provide approximately \$4,019,315 annually to be used for the repair, maintenance and restoration of Perris roads, including arterial streets, collector streets and truck routes.

All funds from Measure A must stay in Perris. The state or federal government cannot touch one dime. Measure A does not apply to city residents – it is a common-sense solution to fix our roads. Please join business leaders, and neighbors in Voting YES on Measure A.

By: Michael M. Vargas, Mayor
Malcolm Corona, Councilmember

REBUTTAL TO ARGUMENT IN FAVOR OF MEASURE "A"

Measure A will increase taxes on Perris businesses, workers and residents.

Measure A is a new \$120 million tax that targets Perris businesses and their employees, including those who live in our city. The tax hike will raise the costs of any goods distributed from these Perris businesses and will negatively impact hard-working families, small businesses and others in the City that buy these goods.

VOTE NO ON MEASURE A. It's a job-killing double-tax.

The City Council knows that whenever it approves a development project, warehouses pay to maintain and improve City infrastructure – roads, sidewalks, parks and other community projects. Developers also pay Road and Bridge District fees that fund road improvements in Perris. In fact, the City is sitting on over \$30 million of unspent RBD fees.

Now, the City Council hopes voters will approve a NEW \$120 million tax on businesses that create good-paying jobs in Perris' warehouses – for roads the businesses have already paid to improve and maintain. The City Council should do its job and spend the money it has already collected before asking for more.

VOTE NO ON MEASURE A. It's a job-killing double-tax.

Perris' unemployment rate is more than 20% higher than California's unemployment rate. Raising taxes will increase high unemployment. Worse still, the new \$120 million tax threatens future development and job creation and will raise prices for everyone in Perris.

Now isn't the time to raise taxes.

On Nov. 7th, Vote NO on Measure A.

Learn more: www.NoMorePerrisTaxes.com

By: Devon Sulli, Executive Director, NAIOP-IE

ARGUMENT AGAINST MEASURE "A"

Measure A is another massive \$120 million tax on businesses that create good-paying jobs in Perris' warehouses. This proposed tax is harmful for our city and for the men and women who build and work at these facilities.

VOTE NO ON MEASURE A. It's a job-killing double-tax.

Warehouse facilities in Perris already pay for road, sidewalk, parks and other community improvements when the City Council approves these projects. Developers also pay Road and Bridge District fees to cover the cost of road and bridge improvements.

Now the City Council wants to tax them, AGAIN. The City Council wants to impose a new \$120 million tax to fund road improvements when the City is sitting on millions in unspent taxes and fees that warehouses have already paid for road improvements.

VOTE NO ON MEASURE A. It's a job-killing double-tax.

The businesses that occupy warehouses provide family-supporting jobs. Union labor builds these projects – providing employment close to where workers live and raise their families. Projects here mean less commute time to/from work, less air pollution and more time spent at home. This \$120-million tax will slow future warehouse development, costing our community good jobs in the future and will drive businesses employing Perris residents out of the city.

VOTE NO ON MEASURE A. It's a job-killing double-tax.

This tax hike couldn't come at a worse time. Unemployment is still above 4%. The inflation rate is now 4.6% which means that eggs, meat, bread, diapers – items families need – cost more.

Warehouse projects already pay taxes and fees to upgrade and maintain Perris' roads – tax dollars sitting in city coffers unspent.

Now isn't the time to raise taxes.
Learn more: www.NoMorePerrisTaxes.com

By: Devon Sulli, Executive Director, NAIOP-Inland Empire

REBUTTAL TO ARGUMENT AGAINST MEASURE "A"

The lone author of the argument against doesn't live in Perris, understand our community, or have his facts right.

Voting YES on Measure A ensures our streets and potholes get fixed without increasing taxes one cent on our residents.

Fact: Warehouse facilities pay a one-time fee to help with **new** roads and bridges, **not** ongoing maintenance, or costs to help keep our roads safe and in good driving condition.

Fact: Over the past 15 years the industrial growth to our area has created a lot of demand on and damage to our local roads.

Fact: Large trucks that service these warehouses contribute greatly to the potholes, cracks and our poor roads. While the City has been responsible making the most efficient use of limited resources, the ongoing strain to our roads is beyond available resources.

Fact: Measure A is targeted specifically to large warehouse businesses with significant truck activity, ensuring they pay their fair share, and provides \$4 million annually in dedicated funding to fix our public roads.

Fact: Measure A is fiscally accountable:

- Legally, funds may only be used to repair streets and roads in Perris and can't be taken by the state or federal governments
- Funds would be subject to annual general financial audits

Perris has made great strides over the years, drawing more families and businesses. Small and large business alike support Measure A because it is a modest, reasonable way to repair our streets and keep our community strong. **Vote YES on A!**

By: Michael M. Vargas
Malcolm Corona
Armando Hurtado, HASB Founder

Riverside, California



Same Day Voter Registration



Did you forget to register or update your voter registration? No Problem! You can register to vote and vote until 8:00 p.m. on Election Day at the Registrar of Voters office or at any Vote Center. This process is called Conditional Voter Registration (CVR) and is commonly referred to as Same Day Voter Registration. Here's how it works:

1. Visit the Registrar of Voters office or a Voter Center in Riverside County which can be found in the County Voter Information Guide or at voteinfo.net.
2. Complete a voter registration card or register online at RegisterToVote.ca.gov.
3. Vote your ballot.
4. Once the Registrar of Voters processes your registration, and determines you are eligible, you will be registered to vote and your ballot will be counted.

To learn more about Same Day Voter Registration, visit sos.ca.gov/elections/voter-registration/same-day-reg.

If you have questions regarding Same Day Voter Registration, please call (951) 486-7200 or toll free (800) 773-VOTE (8683).

You may check the status of your voter registration at www.voteinfo.net/AmlRegistered.



California Motor Voter



The California Motor Voter program is making registering to vote at the California Department of Motor Vehicles (DMV) more convenient and secure. All eligible individuals completing driver's license or ID card or change of address transactions at the DMV will be registered to vote with the California Secretary of State unless they "opt out" of automatic voter registration.

The California Motor Voter program applies to Californians who are 18 years or older and meet the following criteria:

- A United States citizen and a resident of California.
- Not currently serving in a state or federal prison for the conviction of a felony.
- Not currently found mentally incompetent to vote by a court.

Note: Voter pre-registration is available for those 16 and 17 years of age. Their voter registration will become active automatically when they turn 18.

Before visiting a DMV field office, we recommend making an appointment. Visit <https://www.dmv.ca.gov/portal/dmv/detail/portal/foa/welcome> to get started. You can also use DMV online services (<https://www.dmv.ca.gov/portal/dmv/dmv/onlinesvcs>) to renew your driver's license or ID card or change your address.

If you indicate you're eligible to vote, once you complete your driver's license or state ID renewal form transaction online, by mail or in person at the DMV, your voter information is then transmitted securely and electronically to the California Secretary of State.

Please note that drivers with an AB 60 driver's license are not eligible to participate in the California Motor Voter program and are not eligible to vote.

For more information, visit MotorVoter.sos.ca.gov.

To register to vote online, visit RegisterToVote.ca.gov.



Remote Accessible Vote-by-Mail

The Remote Accessible Vote-by-Mail (RAVBM) system delivers ballots to voters electronically. RAVBM is not “internet voting!” The system was created as a tool to allow voters with disabilities who prefer or need to vote from home, the option to read and mark their ballot with more privacy and independence. Under Assembly Bill 37 (2021), any active registered voter may now use the RAVBM system. To ensure the privacy of each voter’s selections, the RAVBM system does not store the voter’s choices or transmit them over the internet.

RAVBM lets you:

- Download, mark, and print your ballot at home
- Use your own assistive technology to read and mark the ballot
- Select the language for your ballot

How Can I Vote Using the RAVBM System?

1. Request an RAVBM ballot Access Link

Contact the elections office by phone at (951) 486-7200 or (800) 773-VOTE (8683), by email at rovweb@rivco.org, or on the web at www.voteinfo.net. Log into the RAVBM system by entering your personal information to verify your eligibility.

2. Mark your ballot

Use the link to access and open your ballot and instructions. Review and mark the ballot on your own computer, with your own assistive technology, if needed.

3. Review and print your ballot

Check your ballot and make corrections, if needed. Download and print your ballot.

4. Seal and sign the ballot envelope

Put your RAVBM ballot in the envelope you received in the mail. Sign the voter’s declaration (punched holes tell you where to sign). Seal the envelope. You must sign this envelope for your ballot to be counted. If you cannot sign your name, you may make a mark on the signature line and have someone else write your name and sign the envelope as a witness.

If you do not have your county-issued ballot return envelope, follow the instructions in the return package. RAVBM ballots cannot be returned by email or fax.

5. Return your ballot



By mail – Your envelope has pre-paid postage!



At any official ballot drop box in California.



At any voting location in California or the Riverside County elections office.

VOTER BILL OF RIGHTS

YOU HAVE THE FOLLOWING RIGHTS:

- 1** **The right to vote if you are a registered voter.** You are eligible to vote if you are:
 - a U.S. citizen living in California
 - at least 18 years old
 - registered where you currently live
 - not currently serving a state or federal prison term for the conviction of a felony
 - not currently found mentally incompetent to vote by a court
- 2** **The right to vote if you are a registered voter even if your name is not on the list.** You will vote using a provisional ballot. Your vote will be counted if elections officials determine that you are eligible to vote.
- 3** **The right to vote if you are still in line when the polls close.**
- 4** **The right to cast a secret ballot** without anyone bothering you or telling you how to vote.
- 5** **The right to get a new ballot if you have made a mistake,** if you have not already cast your ballot. You can:
 - Ask an elections official at a polling place** for a new ballot,
 - Exchange your vote-by-mail ballot** for a new one at an elections office, or at your polling place, or
 - Vote using a provisional ballot.**
- 6** **The right to get help casting your ballot** from anyone you choose, except from your employer or union representative.
- 7** **The right to drop off your completed vote-by-mail ballot at any polling place** in California.
- 8** **The right to get election materials in a language other than English** if enough people in your voting precinct speak that language.
- 9** **The right to ask questions to elections officials about election procedures** and watch the election process. If the person you ask cannot answer your questions, they must send you to the right person for an answer. If you are disruptive, they can stop answering you.
- 10** **The right to report any illegal or fraudulent election activity** to an elections official or the Secretary of State's office.
 - 🖥️ On the web at www.sos.ca.gov
 - 📞 By phone at **(800) 345-VOTE (8683)**
 - ✉️ By email at elections@sos.ca.gov

**IF YOU BELIEVE YOU HAVE BEEN DENIED ANY OF THESE RIGHTS, CALL THE SECRETARY OF STATE'S
CONFIDENTIAL TOLL-FREE VOTER HOTLINE AT (800) 345-VOTE (8683).**

IMPORTANT DATES



First day you can vote. Each eligible registered voter will begin receiving their ballot by mail beginning this day.



Registration Deadline. Check your registration status online or by calling our office.



More Days, More Ways to Vote! Vote early in-person at any of the 4-day or 11-day **Vote Centers** in the City of Perris, including Election Day. For a complete list of Vote Centers and hours of operation, please visit our website at www.voteinfo.net or call our office at (951) 486-7200.



Election Day!

Mail in or drop off your Vote-by-Mail ballot today! Mailed-in ballots must be postmarked by this date and received no later than November 14 to be counted.

In-person voting also available at any Vote Center or the Registrar of Voters office.

Ballot Drop-off locations, Vote Centers and the Registrar of Voters office open from 7:00 a.m. - 8:00 p.m.



Do you know someone who is not registered to vote? Need to check your voter registration status?



Check your voter registration status, update your registration information, or register to vote online. Visit www.voteinfo.net for more information.



Request a voter registration card be sent by mail to update your registration information, or to register to vote. Call (951) 486-7200 or (800) 773-VOTE (8683) for more information.

VOTE BY MAIL

THE VOTING PROCESS IS DIFFERENT!

All eligible registered voters in Riverside County for the November 7, 2023, City of Perris Special Measure Election will receive a ballot by mail beginning Tuesday, October 10, 2023.

Return your ballot as soon as possible to ensure that it is included in the first Election Night results!



Return your ballot by mail: If you choose to vote at home, you can return your ballot by mail (no postage required). Ballots returned by mail must be postmarked by Election Day and received by November 14, 2023 to be counted.

Drop off your ballot: You can drop off your ballot at any secure Ballot Drop-Off box, Vote Center, Polling Place, or the Registrar of Voters office. Please visit our website at www.voteinfo.net for location information and hours.

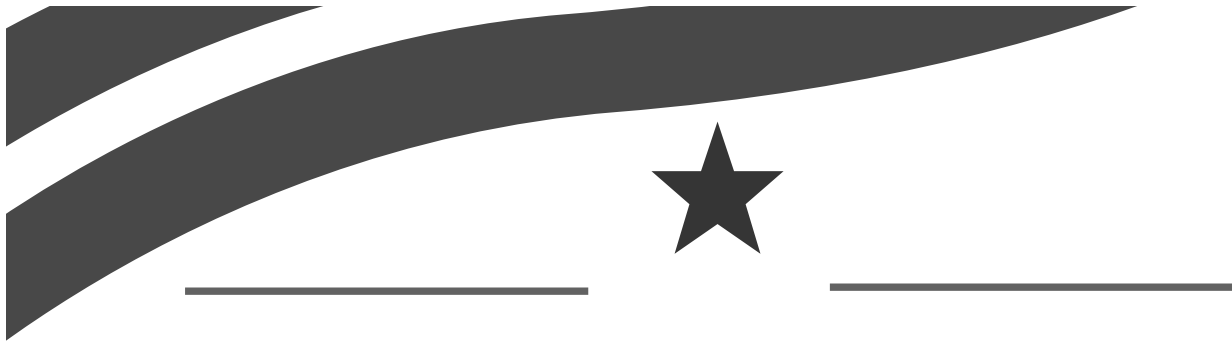
Remote Accessible Vote by Mail Ballot (RAVBM)

Accessible Vote-by-Mail provides an accessible option for voters to mark their ballots privately and independently. To complete a RAVBM ballot visit www.voteinfo.net. Your completed ballot and signed Oath of the Voter must be returned to the Registrar of Voters office to be counted. Return your RAVBM ballot by mail or at one of our secure Ballot Drop-Off locations.

VOTE IN PERSON

The Riverside County Registrar of Voters offers a variety of options to vote in person.

Registrar of Voters	Ballot Drop-Off Locations	Vote Centers
<p>October 10 – November 6 Monday - Friday 8:00 a.m. – 5:00 p.m.</p> <p>October 28 – October 29 9:00 a.m. to 5:00 p.m.</p> <p>November 4 – November 5 9:00 a.m. to 5:00 p.m.</p> <p>Election Day, November 7 7:00 a.m. – 8:00 p.m.</p>	<p>October 10 – November 6 Dates, Locations, and Hours Vary</p> <p>All Drop-Off Locations Open Election Day, November 7 7:00 a.m. to 8:00 p.m.</p> <p>Registrar of Voters Secure drop box 24 hours a day</p> <p>See the list of locations and hours online at www.voteinfo.net</p>	<p>Dates, Locations, and Hours Vary</p> <p>11 - Day Vote Center Open October 28 to November 7</p> <p>4 - Day Voter Centers Open November 4 to November 7</p> <p>All Vote Centers Open Election Day, November 7 7:00 a.m. – 8:00 p.m.</p>



ARE YOU...

Interested in Learning About the Voting Process?

Motivated to Serve the People in Your Community?

Detailed Oriented? • A Team Player? • A Problem solver?

BE AN ELECTION OFFICER!

Call (951) 486-7341 or (877) 663-9906

We encourage individuals with bilingual skills in Spanish, Tagalog, Korean, Chinese (Cantonese/Mandarin), Vietnamese, and American Sign Language (ASL) to serve their communities as Election Officers

Check Your Voter Status Online



Visit the Secretary of State's My Voter Status page at VoterStatus.sos.ca.gov, where you can check your voter status, find your vote center, and much more.

Use **My Voter Status** to:

- See if you are registered to vote
- Check your political party preference
- Find your vote center
- Find upcoming elections in your area
- Receive your Voter Information Guide (VIG) by email before each statewide election (see below for more information on opting-out of the VIG)
- Check the status of your vote-by-mail ballot or CVR ballot

To check your voter status you will need some personal information like first name, last name, California driver license or identification card number, social security number (last 4 numbers), and date of birth.

You can use the My Voter Status tool to opt out of receiving the state VIG. However, if another registered voter in your household requests to get it by mail, a state VIG will still be mailed to your address. If you have opted out and do not receive the state VIG in the mail, information on statewide candidates and ballot measures will still be available at the VIG website (<http://voterguide.sos.ca.gov/>) before each statewide election.

Go to VoterStatus.sos.ca.gov to get started.

Pre-register at sixteen. Vote at eighteen.

Online Pre-registration is now available for eligible 16 and 17 year olds at RegisterToVote.ca.gov or via the paper voter registration form. California youth who Pre-register to vote will have their registration become active once they turn 18 years old.

Pre-register in 4 easy steps:

1. Visit www.RegisterToVote.ca.gov
2. Click the "Pre-register to Vote" button
3. Become automatically registered on your 18th birthday
4. Cast your ballot on Election Day!

What is Pre-registration?

If you are 16 or 17 years old and meet all other voter eligibility requirements, you can Pre-register to vote at RegisterToVote.ca.gov.

Simply complete the online Pre-registration application and on your 18th birthday, you will automatically be registered to vote.

FROM



FIRST
CLASS
POSTAGE

PLACE STAMP HERE

DID YOU SIGN YOUR REQUEST?

**REGISTRAR OF VOTERS
2724 GATEWAY DRIVE
RIVERSIDE CA 92507-0923**



ACCOMMODATIONS FOR VOTERS WITH DISABILITIES

All Vote Centers are accessible to voters who are physically disabled. Please be advised of the following alternate ways you may cast your ballot.

- **By Mail** - Your ballot must be received at the Registrar of Voters office no later than 8:00 p.m. on Election Day or be postmarked on or before Election Day and received no later than seven days after Election Day to be counted. You may request a Vote-by-Mail ballot for all future Elections. Simply contact the Registrar of Voters office by calling (951) 486-7200, (800) 773-VOTE (8683), California Relay Service (Dial 711).
- **Early Voting** - You may vote at the Registrar of Voters office October 10 - November 6, Monday through Friday, 8:00 a.m. to 5:00 p.m.; October 28 - October 29, 9:00 a.m. to 5:00 p.m., and November 4 - November 5, 9:00 a.m. to 5:00 p.m.; and Election Day, November 7, 7:00 a.m. to 8:00 p.m. Please visit our website at www.voteinfo.net for additional early voting locations and information.
- **Remote Accessible Vote by Mail Ballot (RAVBM)** - Accessible Vote-by-Mail provides an accessible option for voters to mark their ballots privately and independently. To complete a RAVBM ballot visit www.voteinfo.net. Your completed ballot and signed Oath of the Voter must be returned to the Registrar of Voters office no later than 8:00 p.m. on Election Day or be postmarked on or before Election Day and received no later than seven days after Election Day to be counted.
- **Curbside Voting on Election Day** - If you are unable to enter the location due to a physical disability, you may request Curbside Voting at any Vote Center. Curbside Voting doorbells and signs are available at all Vote Centers. If you require Curbside Voting assistance you may call (877) 663-9906 before going to a Vote Center and/or when you arrive at the facility. An Election Officer will be contacted prior to your arrival to meet you at the curb.

REGISTRAR OF VOTERS
2724 GATEWAY DRIVE
RIVERSIDE, CA 92507-0918



NONPROFIT
U.S. POSTAGE
PAID
Registrar of Voters
Riverside

REQUEST TRANSLATED ELECTION MATERIAL
VOTER INFORMATION:

NAME AS REGISTERED

RESIDENCE ADDRESS AS REGISTERED

CITY STATE ZIP

MAIL MATERIALS TO:
ADDRESS (IF DIFFERENT)
CITY STATE ZIP

I declare, under penalty of perjury, that the information provided is true and correct to the best of my knowledge.

SIGNATURE REQUIRED
SIGNATURE OF VOTER DATE

33-BCov 11-7-2023

Translated election materials are available for select precincts. If you would like to receive materials in another language, complete and return this postcard to the Registrar of Voters office. Translated materials will also be available at the Registrar of Voters office and at all Vote Centers.

I wish to receive election materials in:
 Español-Spanish

I wish to receive translated reference ballots in: (select one only)
 한국어 - Korean Tiếng Việt - Vietnamese
 Tagalog - Tagalog 中文 - Chinese

↓ POSTMASTER DELIVER TO ↓

BALLOT TYPE 001

OPT-IN TO VIEW YOUR COUNTY VOTER INFORMATION GUIDE ONLINE!

You can view all future County Voter Information Guides online with 24/7 access at your convenience.

It's easy and great for the environment.

Please visit our website at www.voteinfo.net or call (951) 486-7200 or (800) 773-VOTE (8683)

VOTE EARLY
IT'S QUICK
IT'S EASY
IT'S CONVENIENT
GET OUT OF LINE ON ELECTION DAY!
VOTE-BY-MAIL

↓ LOCATION OF YOUR VOTE CENTER ↓



All voters will receive a ballot in the mail. A list of available vote center locations is printed in the Voter Information Guide.