

DRAFT ELECTION ADMINISTRATION PLAN



County of Riverside Registrar of Voters

2724 Gateway Drive
Riverside, CA 92507

(951) 486-7200

rovweb@rivco.org

www.voteinfo.net

Table of Contents	2
Executive Summary	3
Vote-by-Mail Ballots	5
Vote Center & Drop-Off Box Locations	8
Services for Voters with Disabilities	15
Language Assistance Services	19
Voting Technology	22
Voting Security	25
Fiscal Impact	28
Voter Education and Outreach Plan	29
Election Activities & Support	40
Post-Election Activities	43
Appendices	46

Executive Summary

It may seem like the County of Riverside is ushering in a new era when it comes to switching to the Voter's Choice Act, or VCA, to serve its diverse and growing populace. However, that is not the case. The COVID 19 pandemic and subsequent election law amendments adopted over the past three years have encouraged the Registrar of Voters team to go from meticulously studying the merits of potential change to making it happen in a short amount of time.

The Registrar of Voters team began the official transition to the vote center model by modifying recently-created procedures and policies and developing new plans that build upon what worked for the November 2020 and September 2021 elections.

The Registrar of Voters (ROV) office enjoys having many strong community partnerships, which will only continue to be enhanced through the transition process to the vote center model. Our local Voting Accessibility Advisory Committee (VAAC), Language Accessibility Advisory Committee (LAAC), Election Observer Panel, County Supervisor Elections Ad-Hoc Committee, and board appointed County Elections Advisory Committee will help provide key insights based on their voting experiences and that of others. You can learn more about joining the county's VAAC, LAAC, and Election Observer Panel on the Registrar of Voters website at www.voteinfo.net. It should be mentioned that our City Clerks, as our local election partners, are excited to help us promote this exciting change to our residents. We are also grateful for the support and guidance provided by the California Secretary of State (SOS), the five counties who transitioned to the vote center model in 2018 and neighboring counties who have also switched in recent years.

This Election Administration Plan, or EAP, provides the foundation and guiding outline for the future of voting and elections in Riverside County. Additionally, the ROV has launched a website, www.voteinfo.net/votecenter dedicated to informing the public about the upcoming changes, providing planning updates and to seek input from the public for future revisions to the EAP.

Following the finalization of the plan, the ROV will implement a comprehensive Voter Education and Outreach Plan ranging from expanding our social media presence, partnerships with high schools and higher education institutes such as UC Riverside and the Riverside, Mt. San Jacinto, and Desert community college districts, as well as collaborating with elected officials and government agencies. The plan is a framework for the Registrar of Voters to meet its goal of informing Riverside County's 1.3 million registered voters of the upcoming changes and transition to the vote center model.

The first official election under this new model was the June 7, 2022 Gubernatorial Primary Election, and we look forward to continuing to provide Riverside County voters with the convenient and secure voting options and improved voter experience they've come to expect since November 2020.

This new voting model means that all registered voters will continue to receive a vote-by-mail ballot, while being able to opt to vote in-person at any vote center in Riverside County. At the time of preparing this EAP, approximately 146 vote centers and 87 ballot drop off boxes are expected based on current voter counts and California Election Code requirements.

On behalf of my team, we look forward to this exciting transition to a new voting model that will serve all Riverside County residents well going into the future. We look to continue to provide our citizens with the best voting experience possible, while ensuring equal access to the ballot, protecting the integrity of votes, and maintaining a transparent, accurate and fair process.

Rebecca Spencer
Registrar of Voters
County of Riverside, CA

Vote-by-Mail Ballots

Elections Code §4005(a)(8)(A)

The implementation of the Voter's Choice Act, or VCA, in Riverside County requires that every one of its 1.3 million registered voters receive a Vote-by-Mail, or VBM, ballot. Riverside County has been meeting this obligation to print, mail and process this large quantity of ballots since the November 2020 Presidential Election in complying with changing laws related to the COVID-19 pandemic. Voters are growing familiar with the hybrid Vote-by-Mail model with in-person voting options, while the Registrar of Voters has ramped up its inventory of equipment and supplies and shifted its resources to embrace this new voting model.

Further, for all future elections, all voters in California will now receive a ballot in the mail regardless of preference or voting model, pursuant to Assembly Bill 37 (Berman, 2021).

History

Even before the law change, over 75 percent of Riverside County voters chose to permanently receive their ballot at home. This is a trend that the Registrar of Voters has taken into consideration and continues to account for by expanding its footprint of convenient return options for voters, while increasing its capacity to efficiently process returned VBM ballots. The Registrar of Voters increased its capacity to process ballots in 2019 in anticipation of the growing trend of voters casting ballots via mail.

Ballot Printing

Riverside County utilizes the assistance of a state certified firm to print ballots and return ballot envelopes. This strong partnership allows for permanent team members to spend more care and attention on the content that goes out to voters, including the inserts and instructions that go into each VBM packet, while keeping overhead costs to a minimum.

The Registrar of Voters staff ensures accuracy of all produced materials throughout every step of the process, including a thorough proof of ballots before they are mailed to all voters.

A vote by mail packet is sent to voters in an envelope labeled with the Official Election Mail logo and contains the following:

- A postage paid return envelope
- The official ballot, which may be on multiple ballot cards depending on how many contests are in the election.
- Instructions on how to complete and return the ballot
- An “I Voted” sticker

The vote by mail return envelope has punched holes bookending the signature line which allows voters with disabilities a tactile way to find the signature line.

Processing Returned Vote-by-Mail Ballots

The Registrar of Voters operates its own high-speed mail sorting equipment that is used to process return ballots. The equipment takes digital images of every single returned envelope and tracks that it has been returned. The images are used by staff members to compare the signature taken from the VBM envelopes to that of the voter registration on file to determine that the correct voter has returned his or her ballot. With the current configuration, Riverside County has successfully taken on the additional volume of return VBM envelopes in the November 2020, September 2021, June 2022, and November 2022 elections.

24-Hour Operations

During large elections such as the November 2020 Presidential General Election and the September 2021 California Gubernatorial Recall Election, the Registrar of Voters has implemented a “night shift” where permanent staff members oversee temporary elections staff performing some ballot processing tasks. This shift, which takes place usually two weeks before Election Day, is from 6:00 pm to 2:30 am.

Based on recommendations from the Riverside County Executive Office and Board of Supervisors over the past year, the Registrar of Voters plans to be prepared to implement around-the-clock operations if necessary to meet the heightened demand of large-scale elections in order to certify election results faster.

Counting Returned Vote-by-Mail Ballots

Riverside County replaced its voting system in 2019, which has drastically improved the county's capacity for processing returned VBM ballots. The county currently has 10 high-speed ballot tabulators that can simultaneously scan ballot cards. The system also includes eight dedicated adjudication stations, which are used by staff to determine the voter's intent on any items the tabulator cannot read, ensuring that all votes count as intended.

Tracking Vote-by-Mail Ballots

The switch to all voters receiving Vote-by-Mail ballots over the past two years has required elections administrators to make it a priority to let voters know the status of their individual ballot. Riverside County is no exception. Residents here are able to find out when their VBM package is scheduled to arrive in their mailbox and when their completed VBM has arrived at the Registrar of Voters office through a state-led effort. Called BallotTrax, the voter receives an automated text message or email letting them know about key moments in the VBM process. This tracking system provides our office data so that we can better identify ways to enhance the voting experience.

Vote Center & Ballot Drop-Off Box Locations

Elections Code §4005(a)(10)(B)

The Voter's Choice Act establishes detailed criteria and formulas for the placement and locations of vote centers and ballot drop boxes. Vote centers and ballot drop box locations will be decided based on specific considerations and requirements, including:

- Proximity to public transportation
- Proximity to communities with historically low vote-by-mail usage
- Proximity to population centers
- Proximity to language minority communities
- Proximity to voters with disabilities
- Proximity to communities with low rates of household vehicle ownership
- Proximity to low-income communities
- Proximity to geographically isolated populations
- Access to accessible and free parking
- The distance and time a voter must travel by car or public transportation
- Traffic patterns near vote centers and ballot drop-off locations
- Proximity to communities of eligible voters who are not registered to vote and may need access to same day voter registration
- Need for alternate methods for voters with disabilities for whom vote by mail ballots are not accessible to cast a ballot
- Need for mobile vote centers
- Vote center location on a public or private university or college campus

Vote Center Formula

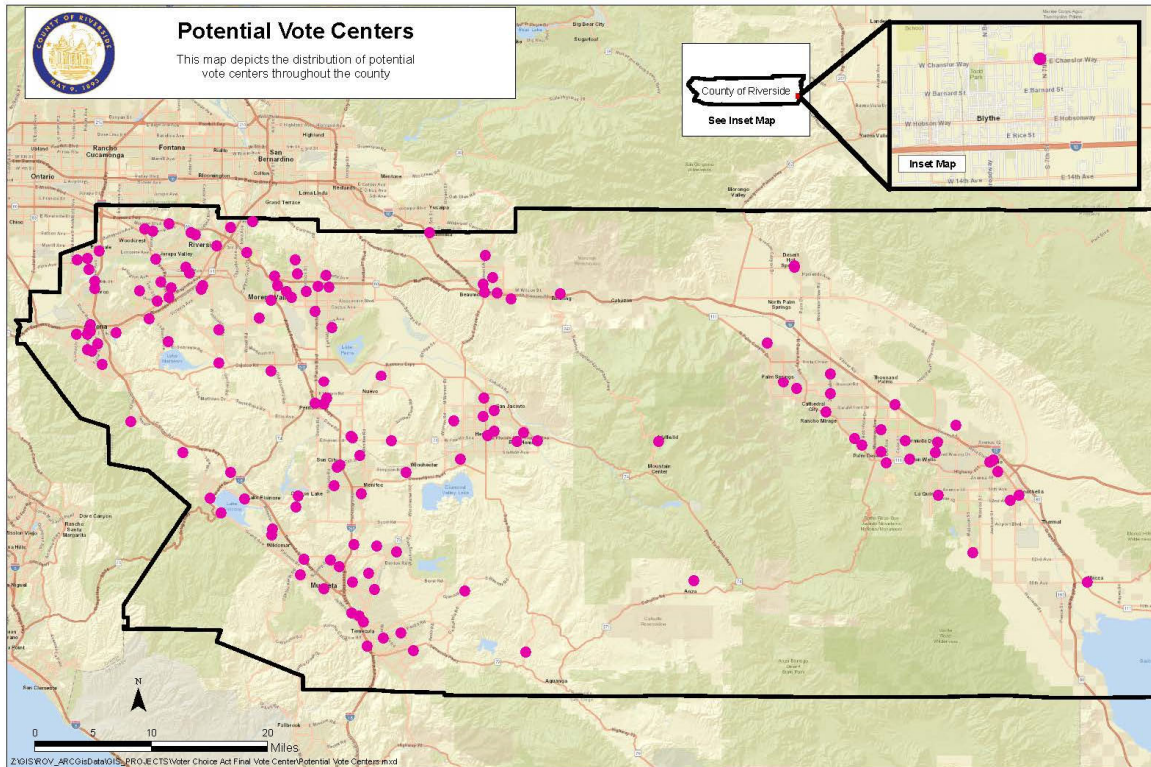
Elections Code §4005(a)(10)(i)(vi)(I)

The Voter's Choice Act establishes a formula for determining the number of vote centers based on the number of registered voters in a county. Counties are mandated under this voting model to provide one 11-day vote center for every 50,000 registered

voters and one 4-day vote center for every 10,000 registered voters. Based on the formulas outlined in the Voter's Choice Act and based on Riverside County's current voter population of 1,300,000, Riverside County would have a required minimum of 26 Vote Centers open for 11 days, and 130 Vote Centers that will be open for 4 days, including Election Day.

The Registrar of Voters has provided more vote centers than the minimum requirements during the November 2020, September 2021, June 2022, and November 2022 elections; most recently offering 146 in-person voting locations for 4 days during the November General Election. This expansion of the number of in-person voting locations has allowed for expanded coverage to meet the needs of a diverse, expansive county with many isolated communities.

This dedication to increased coverage will remain going into the March 2024 election, as the Registrar of Voters is looking at establishing 26 Vote Centers that will be open for 11 days and approximately 146 locations that will be open starting 4 days before Election Day.



Vote Center Minimum Requirements

Vote centers will be decided based on requirements established in statute, accessibility to voters with disabilities and language needs, availability, and public feedback. The Registrar of Voters will use historical data, as well as voter and population data to pick the best locations for vote centers.

The Registrar of Voters leaned heavily on the use of government buildings during the pandemic during November 2020's implementation of a "VCA like" voting model. This methodology continued during the September 2021, June 2022, and November 2022 elections. These sites fulfill many of the considerations and criteria that the Voter's Choice Act mandates that counties consider, which means that Riverside County voters will enjoy continuity in knowing where in-person options for voting are located. Additionally, the Registrar of Voters office plans to continue to maintain an active database of potential vote center locations that are surveyed on an ongoing basis to ensure they meet the accessibility needs of all voters. The county is working with

communities to address any concern for locations and is actively working to incorporate resolutions to mitigate these concerns.

Vote Center Facility Recruitment Process

Past polling places from previous elections are reviewed and assessed to see if they meet Riverside County's minimum requirements for a Vote Center. Locations that will not be able to accommodate Vote Centers due to square footage limitations, available timing or other factors related to specific requirements have been contacted to inform them that they will no longer be able to meet the more-stringent needs and standards set by the VCA.

The Registrar of Voters plans to send letters inquiring about the availability of potential sites approximately 6 months prior to each scheduled election. This advanced communication is intended to help the department retain continuity with agency partners and help them plan for being available for multiple days of voting.

In addition to considering required criteria, a vote center survey assessment considers many of the other site selection elements that, while not required by law, impact the vote center siting process. Some examples of these site selection elements include path of travel, size of the voting room, the presence of adequate lighting (both inside and outside), the geographic area of the proposed site, internet connectivity, and electrical capacity.

Vote Center Layout

Elections Code §4005(a)(10)(I)(vi)(XI)

The voting experience at a Riverside County Vote Center is similar to voting at a traditional polling place, with some key exceptions. All Vote Centers offer multiple electronic check-in stations where elections staff are able to verify a voter's identity easily and provide them quick access to their unique ballot. Each vote center shall have at least three voting machines that are accessible to voters with disabilities.

Citizens can do the following at any of these in-person voting locations:

- Vote their specific in-person ballot on a ballot-marking device

- Cast a ballot in multiple languages
- Drop off their completed and signed Vote-by-Mail ballot envelope
- Register and vote on the spot utilizing Conditional Voter Registration

Each Vote Center features 10 ballot-marking devices and five check-in stations in an effort to promote a balance between timely customer service and the space and privacy for voters to freely cast their ballots. Vote Centers also include dedicated Personal Protective Equipment, or PPE, stations with hand sanitizer, sanitary wipes, face masks, shields and gloves to promote a healthy, inviting space and positive voting experience.

Vote Center Staffing

Elections Code §4005(a)(10)(l)(vi)(IX)

Riverside County is committed to giving voters the best voting experience possible. And that commitment starts with how we train our Election Officers. The Registrar of Voters hires two temporary employees as co-leads for each in-person voting site a month before the election and has them go through a rigorous Election Academy in preparation for the task at hand.

As Riverside County transitions to the parameters set forth of the Voter's Choice Act, the additional week of in-person voting provides an opportunity for these leads to gain first-hand experience at the 26 centers open 11 days before Election Day. This will help them gain valuable experience before taking on the leadership role at the other sites throughout Riverside County.

Based on previous elections under the "VCA like" model and estimated needs for leads at each site, it is anticipated that 6 Election Officers will be at each site during the first week of in-person voting and 10 Election Officers will be at each site starting the weekend before Election Day.

Volunteers from the community also play a critical role in ensuring the success of Vote Centers. To that end, the co-leads at each of the Vote Centers will be joined by at least 8 volunteers starting on the weekend before Election Day. These volunteers

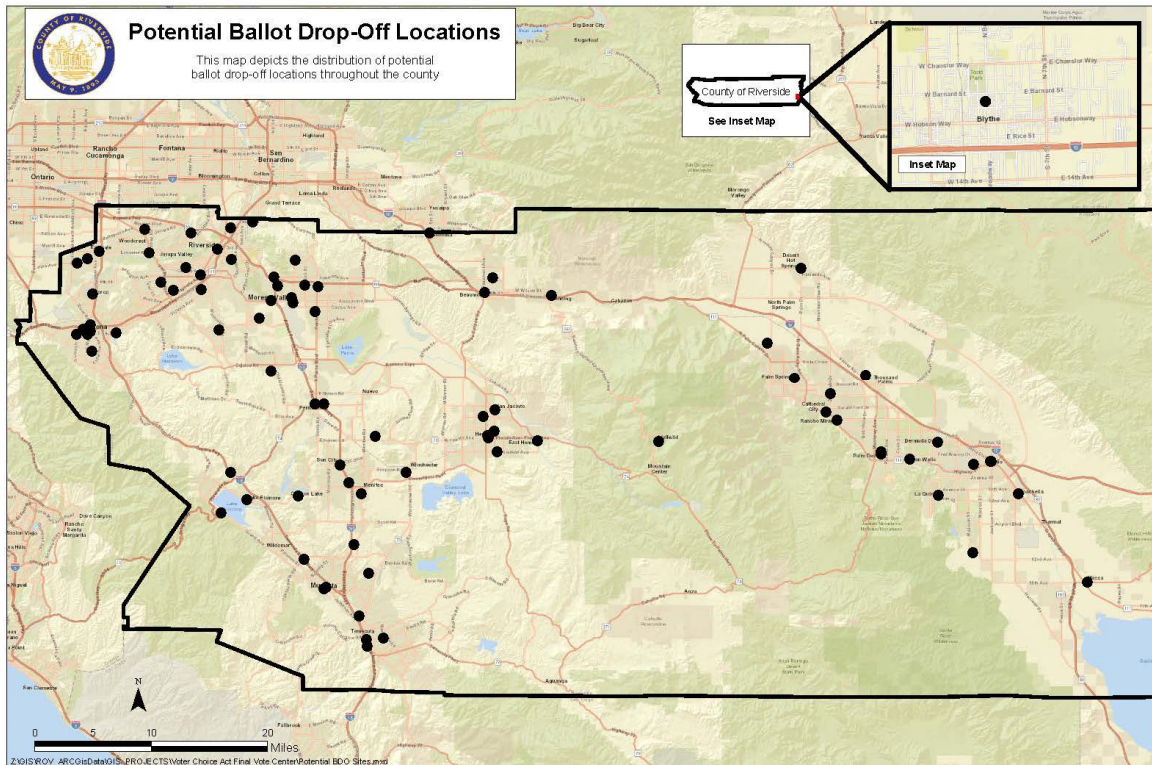
will be well-prepared to help their fellow community members vote, as each one must go through a minimum of two hours of training from Registrar of Voters instructors. These trainings are primarily conducted using the Zoom telecommuting platform, though some in-person training is available.

A critical component of the training process is to include information to ensure accessibility for voters with disabilities. Vote Center staff are trained to properly use the ballot marking device including the audio ballot.

Ballot Drop Box Formula and Considerations

Elections Code §4005(a)(10)(I)(vi)(II)

The Voter’s Choice Act requires counties to provide at least one ballot drop box location for every 15,000 registered voters. Riverside County looks at the voter population in each city and unincorporated areas in Supervisorial Districts to determine the number of ballot drop boxes. The Registrar of Voters will have approximately 87 ballot drop off locations for the March 2024 Election.



The County of Riverside currently utilizes staffed ballot drop off locations, through a

mix of boxes at all 28 City Halls in the county along with staffed drop-off boxes at select locations throughout the county. Like Vote Centers, these locations are selected based on their proximity to major transportation routes, with an emphasis on utilizing government buildings or well-established community gathering places such as community centers, libraries or churches.

Ballot Drop Box Minimum Requirements

Elections Code §4005(a)(10)(I)(vi)(VI)

In addition to the minimum requirements set forth in the Voter's Choice Act, the California Secretary of State's office provides additional regulations such as accessibility and language requirements. Riverside County meets the guidelines through conducting site assessments to ensure teams are positioned at each site in a spot that is conducive to all voters being able to drop off their VBM ballot. The county also displays a poster on each of its drop off boxes that tells the public the drop off is an official ballot box and provides instruction in all required languages.

Site Selection Suggestion Form on Website

Another way Vote Center and Ballot Drop-Off Box locations are selected for assessment is public feedback received through the county website at voteinfo.net/votecenter. The public can click on the Site Suggestion Form link and write a facility name, address and reason for suggesting the site on the fillable PDF document. The Registrar of Voters continually follows up on this valuable feedback and pursuing potential sites.

Services for Voters with Disabilities

Elections Code §4005(a)(10)(I)(vi)(X)

The County of Riverside is committed to supporting all voters, including those with disabilities, through the final transition to Vote Centers. The Registrar of Voters is well-prepared to make this final step through building on its successes in implementing the “VCA-like” model during the November 2020 and September 2021 countywide elections. In the spirit of continuous improvement to benefit county voters, the Registrar of Voters plans to expand and update services for voters with disabilities such as using an updated comprehensive accessibility survey, implementing a new training program to standardize surveying techniques and extending the ability to cast a ballot independently from home.

Updated Accessibility Survey and Training

Elections Code §4005(a)(4)(C)

In order to comply with additional accessibility requirements, the Registrar of Voters has reviewed the SOS Accessibility Checklist and created comprehensive surveys. Information from thorough surveys of each location is used to create draft facility layouts for each site to assist Vote Center leads in setting up equipment. The Registrar of Voters has also taken a more proactive approach to making sure that surveying staff works closely with those who lead the Vote Center trainings to ensure that co-leads at each site take mitigation into account when setting up a particular location.

Additionally, the Registrar of Voters has created an E-Learning Module focused on giving all staff members who conduct surveys a thorough, visual-centric learning experience that allows them to better grasp all the concepts of accessibility surveying and mitigation for items such as path of travel, accessible parking spaces, slopes and door pressure and other items needed to successfully complete the SOS checklist. This training ensures consistency with the terminology and methods taught to each staff member.

References for Services for Voters with Disabilities in Voter Guides

Elections Code §4005(a)(8)(B)(i)(IV)

The Voter Information Guide created by the Registrar of Voters for every election includes information on how voters with disabilities can request assistance, Disability Rights California's Voting Hotline phone number, information about Remote Accessible Vote-by-Mail, or RAVBM and ways to contact the office for any general questions. Additionally, the guide specifies that voters unable to mark a ballot have ways to get assistance.

Requesting a Replacement Ballot or RAVBM

Elections Code §4005(a)(8)(B)(i)(IV)

Voters with disabilities may request a Vote-by-Mail ballot, replacement ballot or the RAVBM via the Registrar of Voters website at www.voteinfo.net, emailing us at ROVWeb@rivco.org, over the phone, in written form or in person at our office, located at 2720 Gateway Drive in Riverside. Additionally, voters will be able to make the request for a Vote-by-Mail or replacement ballot in person at any Vote Center.

Remote Accessible Vote-by-Mail

Elections Code §4005(a)(8)(B)(i)(IV)

Riverside County registered voters may request a downloadable ballot by connecting to the Remote Accessible Vote-by-Mail, or RAVBM, system. Riverside County partners with Democracy Live to provide this service. RAVBM provides voters the ability to request an electronic ballot. This electronic ballot can be downloaded to the voter's computer, marked using their own assistive technology and then printed. This ballot can then be returned in the same manner as any VBM ballot, including any mailbox, Ballot Drop-Off Box location or Vote Center.

RAVBM was originally a voting option reserved for military and overseas voters and voters with disabilities, but is now available to all voters. RAVBM is accessible for voters who use assistive technology on their home computers, such as screen reader programs.

Accessible Voting Machines

Elections Codes §4005(a)(2)(B), §4005(a)(4)(D), §4005(a)(10)(I)(vi)(X)

All Riverside County Vote Centers will exclusively feature at least 10 accessible ballot-marking devices and will be flexible enough to expand that number depending on voter needs and the size of the voting room.

Voters will be able to mark their ballot using the touch screen display, the device's Audio Tactile Interface or their own assistive technology. The Vote Center facility will be set up with the privacy of all voters in mind, which will provide voters with disabilities an autonomous voting experience. Voting stations will be arranged so that all voters are allowed the opportunity to cast their ballot privately and independently.

Reasonable Modifications at Vote Centers

Elections Codes §4005(a)(6)(D), §4005(a)(10)(I)(vi)(X)

Riverside County's Vote Centers are created with the needs of all voters in mind. All of the ballot-marking devices at Vote Centers utilize a variety of audio and sensory accommodations to meet the needs of those needing assistance. These include screen reading, magnification and inverted colors, along with the capacity for a person to use their own devices used in everyday life to cast their ballot. Magnifiers are available upon request and chairs will be available at check-in tables and voting units upon request. If a voter needs additional assistance, Election Officers will be available to assist a voter as a visual guide.

Each Vote Center site is rigorously surveyed for accessibility, as this switch to the Voter's Choice Act model allows the Registrar of Voters to pick the sites that are the "cream of the crop" in each city and unincorporated area of the county. The Registrar of Voter's Operations team makes sure to provide threshold ramps if there are any slopes that can cause impediments to voters, cones to identify potential hazards and mats to cover tripping hazards. They also identify the ideal way for Election Officers to set up a site to ensure the most appropriate path of travel for all voters to have their best voting experience.

Curbside Voting

The Registrar of Voters is proud to be able to offer voters the ability to cast their ballot without having to leave their vehicle. Voters are able to partake in the Curbside Voting program by calling the Registrar of Voters upon their arrival at the parking lot of a Vote Center or by ringing the Curbside Voter doorbell available at each vote center. Staff will ask the voter if they wish to cast a ballot on a paper ballot or a ballot-marking device. Two Election Officers will bring out an accessible voting unit setup, including the printer and battery supply for the voter's convenience.

Toll-Free Voter Phone Line

Elections Code §4005(a)(10)(l)(vii)

The public will be provided a toll-free voter phone line to direct voters to the accessibility features in order to ask questions and receive voting and election-related information. The toll-free phone number will be published on the Registrar of Voters website, public service announcements and provided in media outreach and direct voter contact information such as Vote-by-Mail ballot inserts and the Voter Information Guide.

Voters that are deaf, hard-of-hearing or speech-disabled may use the California Relay Service by calling 711 to use the telephone system via a text telephone or other device. California Relay Service supports the following modes of communication; TTY, VCO, 2LVCO, HCO, STS, VASTS, ASCII or Voice.

Video Conferencing

The Registrar of Voters will utilize Zoom or Teams to provide American Sign Language interpretation assistance at all Vote Centers.

Language Assistance Services

The Registrar of Voters strives to provide comprehensive and innovative language assistance services to voters in a county that has seen an increased need over the past decade. From having dedicated bilingual staff prepare culturally appropriate translations, partnerships with organizations throughout Riverside County who represent our broad diversity of languages, to participating in many events in each region of the county. The Registrar of Voters is committed to providing numerous opportunities for language communities to learn about this final transition to Vote Centers.

Translated Reference Ballots and Language Assistance Card

Elections Code §13400

Per California Elections Code §14201, the Registrar of Voters is required to provide translated reference ballots at targeted precincts and a card indicating that translated reference ballots in Korean, Tagalog, Chinese (Mandarin) and Vietnamese are available at target precincts.

The targeted precincts are identified through a thorough Language Analysis and the corresponding ballot types are translated by a contracted vendor per requirements under California Elections Code §13307. With the new voting model, Riverside County will provide voters the ability to see a translated reference ballot at a Vote Center using one of the laptops and printers at each site. Each site has live connectivity which allows access to these files via a shared drive. Additionally, voters can request a translated reference ballot by telephone, mail or fax up to 10 days before Election Day.

Riverside County provides an inclusive language assistance card, which lists the availability of translated reference ballots and all language services available to Vote Centers.

Language Assistance Services included in voter guides and website

Elections Code §4005(a)(10)(I)(vi)(IX)

Voters will be notified several times throughout an election about their ability to request translated materials. The Voter Information Guide, which is mailed to all registered voters, as well as instructions inserted in each Vote-by-Mail package, includes information about what materials in different languages and language assistance services are available.

The Registrar of Voters also provides a complete list of language assistance services available under the new voting model on its website, www.voteinfo.net.

Bilingual Support Staffing and Supported Languages

Elections Code §4005(a)(10)(I)(vi)(IX)

The Registrar of Voters makes sure that all Vote Center locations are properly staffed to meet the language needs of all voters, including making sure that each site has multiple Spanish speakers serving as Election Officers. The office goes further by determining which Vote Centers are located in precincts that meet language requirements under the federal Voting Rights Act for in-person language assistance. Additionally, the Registrar of Voters plans to seek public input regarding which Vote Centers should have staff members who are fluent in specific languages.

At Vote Centers identified as meeting language assistance requirements, voters will still have alternate options to receive in-language assistance including translated written materials, assistance with Registrar of Voters staff via telephone call or assistance through video conferencing.

Toll-Free Voter Phone Line and Multilingual Public Call Center

Elections Codes §4005(a)(10)(I)(vii), §4005(a)(10)(I)(i)(I)

Leading up to Election Day, the Registrar of Voters operates a public call center to assist voters that is staffed with bilingual operators in federal and state required languages before, during and after an election to provide in-language assistance. Language voters may also call a toll-free voter phone line to ask questions and receive

voting and election-related information. The toll-free phone number is 1(800) 773-VOTE (8683) and it is activated. The number can be found prominently on the Registrar of Voters Website, www.voteinfo.net, public service announcements, departmental news releases and direct voter contact items such as the Voter Information Guide. This will be the lone toll-free number to serve the public.

Video Conferencing

In addition to the in-person support provided to voters at Vote Centers, the Registrar of Voters also plans to use video teleconference platforms to provide direct one-on-one multilingual assistance to voters. This ensures that voters needing language assistance will be able to interact with trained bilingual staff who can verbally and visually guide the voter to meaningfully participate in the process, even if there is not a particular bilingual staff member at the Vote Center. Telephone support will also be available depending on the preference of the requesting voter.

Supported languages include:

- Spanish
- Vietnamese
- Chinese (Mandarin)
- Chinese (Cantonese)
- Korean
- Tagalog
- American Sign Language

Voting Technology

Direct Connection to Voter Database

Riverside County's formal adoption of the Voter's Choice Act allows the Registrar of Voters to fully take advantage of a mechanism that allows for the efficient and secure processing of eligible voters at any Vote Center location throughout the county. Instead of the former system which called for the creation of paper rosters of voters assigned to a particular polling place, this new voting method allows for a direct connection to the Registrar of Voters election management system.

The Registrar of Voters utilizes five laptops located at the check-in station of each Vote Center. A voter completes a ballot request, where they indicate that they have not voted their original ballot which was sent in the mail and that they are surrendering the use of that ballot in order to vote in-person. Election Officers are able to use that signed document, or a signature placed on a roster page at the check-in table, to search for the voter in the election management system. Once the Election Officer finds the voter in the database, they are given an indication as to whether the voter has already voted or is eligible to cast a ballot.

Voting System

Riverside County replaced its voting system in 2019 due to the state's decertification of certain types of voting equipment which restricted the amount of allowable modifications in a highly-regulated environment. In short, there are few options in California.

The Registrar of Voters entered into a contract with Dominion Voting as a voting system solution for its ballot-marking and tabulation equipment. The Registrar of Voters utilizes their Democracy Suite voting equipment. Each Vote Center features 10 of their ballot-marking devices, which is used exclusively for all voters.

In order to fully maximize the voter experience, the Registrar of Voters also uses the company's Ballot On-Demand technology to provide a paper ballot for those voters

who prefer that option. The office is also exploring adding technology that scans each voter's ballot at the vote center as they cast it.

New Technology

In addition to improving the voter experience, the Registrar of Voters will be unveiling some new technological advances with the move to Vote Centers that will improve cost efficiencies and help reduce the amount of time it takes for Election Night results to be tabulated.

Ballot On-Demand

Under the previous voting method, Riverside County relied on a paper ballot inventory for all voters who were assigned to vote at their neighborhood polling location. This meant that each location had a certain number of voting precincts based on the different ballot types. Riverside County generally has over 400 ballot types in a large election. Because the Voter's Choice Act model gives voters the ability to vote at any vote center, utilizing a paper ballot inventory system would be extremely ineffective and a waste of taxpayer money.

The Registrar of Voters successfully ensured voters cast the correct ballots while voting in person in November 2020 and September 2021 by utilizing its inventory of Accessible Voting Units, or AVUs. The vast majority of voters prefer using this ballot-marking device, though a small number of voters still insisted on wanting a "paper ballot."

Starting with the June 2022 Gubernatorial Primary Election, the Registrar of Voters implemented special printing technology at each Vote Center where Election Officers can print each voter their specific ballot type. This "Ballot On-Demand" system ensures that the Registrar of Voters does not have to create a larger-than-necessary paper ballot inventory.

Precinct Scanners

Under the previous voting method, Riverside County voters would place their completed paper ballots in a blue ballot box before leaving the in-person voting location. All the ballots were then securely removed from the blue ballot box once polls were closed and they were securely transported to the Registrar of Voters office to be counted.

The Registrar of Voters plans to add new Precinct Scanner machines at each Vote Center which records all votes cast on each ballot as they are deposited into the ballot box by the voter. All of the results are saved on the machine on a memory card, which will be securely transported to the Registrar of Voters office after polls are closed. This system, along with having the paper ballots as a fail safe in case there are any issues with the memory cards, ensures that election results can be processed in a more efficient and timely manner.

Voting Security

The Registrar of Voters works closely with the county's Information Technology department to pursue security measures to protect ballot integrity, voting equipment, voter registration systems and ensure the eligibility of voters. Although threats are constantly changing and incidents are unique, Riverside County remains steadfast in implementing best practices to prepare for threats and incidents. The Registrar of Voters continues to improve current systems and actively implement new procedures, while instructing all temporary and permanent employees to be vigilant in keeping an eye on potential threats. These warnings are supported with thorough training and the implementation of physical and cybersecurity controls. The county also has inherent security measures in place on its network to ensure systems are not compromised.

Security and Contingency Plans to Ensure Prevention of Disruption

Elections Code §4005(a)(10)(I)(vi)(VIII)(ia)

The Registrar of Voters has a multi-pronged approach to ensure prevention of disruption to election operations through partnerships, internal controls and procedures.

State, Federal, Local Partnerships

Our office has strong working relationships with Riverside County's Chief Information Security office, as well as direct connections with the Department of Homeland Security, Federal Bureau of Investigation and the Election Assistance Commission.

There is increased collaboration around election cycles before and after the election, which includes enhanced security awareness, communication, regular correspondence and virtual meetings.

Internal Controls

The Registrar of Voters enforces a strong approach to ensure security both at its physical location and virtually among all of its employees devices.

During election cycles, the Registrar of Voters restricts access to its main floor not only to the general public but temporary employees as well. The building is also watched 24 hours a day during this time by a private security company.

Mobile device management allows total control of securing and enforcing policies to smartphones, tablets and other devices. It allows for the ability to remotely wipe a device, use password enforcement, enabling application whitelisting or blacklisting, use data encryption enforcement, control software updates, mandate password changes and more.

Leads at every Vote Center have a smartphone to notify them in the event of an emergency. Additionally, these individuals receive training during the Election Academy on how to handle election-specific emergency situations. Each Voter Center has five Uninterrupted Power Supply, or UPS, units to keep the ballot-marking devices operational in case of a loss of power.

Procedures, Methods and Standards

Chain of custody procedures are used as an administrative control as part of the overall strategy to secure election operations. These procedures ensure that physical tracking of voting system equipment is in place.

Voting system components are secured in rooms that require badge access for entry and include surveillance cameras. All voting equipment that is deployed off-site for elections is numerically sealed and tracked until returned to the Registrar of Voters office.

Third-party companies who deliver voting equipment to sites sign chain of custody documents and delivery receipts, while election personnel verify seal logs for voting equipment at in-person voting locations. The personnel also periodically check security seals throughout the day and report any broken seals or suspicious activity.

Registrar of Voters representatives sign for the voting equipment upon its return and then it is inventoried and placed in a secured location.

Security and Contingency Plans to Ensure Continuation of Election in Event of Disruption

Elections Code §4005(a)(10)(I)(vi)(VIII)(ib)

The Registrar of Voters prepares to prevent disruptions during in-person voting; however, it is equally important to be prepared to respond to the real possibility of an incident or disruption. This section outlines the steps taken to be prepared to continue elections operations in the event of a disruption.

Vote Center Response During the Voting Period

During the voting period, election support personnel are located strategically at sites throughout Riverside County, ready to respond to any incident. These satellite depots include replacement ballot-marking devices, key documents and supplies and are trained to handle technical issues. The goal is that these teams can respond to situations in less than half hour. Vote Center leads also have emergency contact information for key Registrar of Voters and County IT personnel and a dedicated helpdesk that can quickly resolve issue and/or dispatch support teams in the field.

All ballot-marking devices function independently and operate without any connectivity to the Internet. In the event of a power outage, there is one UPS for every two voting units to ensure no lapse in voting. And while the Registrar of Voters utilizes Wi-Fi connectivity to access its Election Management System at Vote Centers to update voter history in real-time, the Registrar of Voters has voters sign paper roster and can implement Provisional Ballots to allow for accurate voter participation in the event of disruption.

Fiscal Impact

Because Riverside County replaced its voting equipment in 2019 and because of the Registrar of Voters using the “VCA-like” model for the past two elections, there is some data showing how much it costs to conduct a countywide election using the Voter’s Choice Act model compared to the Polling Place model.

	Nov 2016 General	June 2018 Primary	Nov 2018 General	Mar 2020 Primary	Nov 2020 General	Sept 2021 Recall
Labor	\$3,019,209	\$2,522,527	\$2,987,737	\$3,490,851	\$4,338,809	\$4,501,483
Printing	\$1,636,387	\$1,764,759	\$1,787,320	\$1,577,173	\$2,451,638	\$2,171,384
Postage	\$354,475	\$346,783	\$358,043	\$631,528	\$685,985	\$777,980
Equipment	N/A	N/A	N/A	N/A	\$430,497	\$337,351
Total	\$5,010,071	\$4,634,069	\$5,133,100	\$5,699,552	\$7,906,929	\$7,799,198
Registered Voters	1,022,375	983,917	1,040,218	1,115,675	1,243,154	1,293,611
Turnout	769,193	346,472	650,545	482,272	1,016,896	720,600
% Turnout	75.24%	35.21%	62.54%	43.23%	81.80%	55.70%

Overview of Voter Education and Outreach Plan

The California Voter's Choice Act, or VCA, requires the County to develop a Voter Education and Outreach Plan that provides transparency and informs voters on all aspects of the new voting method. This includes the services and information available at the Vote Centers and Ballot Drop-Off Box locations, as well as information specific to voters with disabilities and language minority voters.

Public meetings will be held with a wide variety of community organizations and individuals that advocate on behalf of, or provide services to, the disability and language minority communities. The Registrar of Voters plans to hold public consultation meetings, public hearings and host educational workshops in an effort to give the public an opportunity to provide input and feedback directly on Riverside's education and outreach plan and to ensure that all residents have a firm understanding about how future voting will be conducted in Riverside County.

Additionally, the Registrar of Voters plans to participate in a wide variety of community events and develop innovative ways to communicate with voters using the ways they consume information. This plan highlights the outreach events this office will coordinate and attend, outlines the new messaging strategies that will increase our community presence and details how resources will be allocated.

The Registrar of Voters is committed to cultivating new relationships with community organizations, interested stakeholders and individual voters, as well as strengthening existing relationships with community partners during this transition to the Voter's Choice Act.

Summary of Goals

- New Riverside County Registrar of Voters website
- Hiring a Public Information Officer
- Public Hearings that thoroughly explain the Voters Choice Act
- Attending community engagement events
- Partnerships with colleges and universities

- Partnerships with high schools
- Multiple direct voter contacts
- Staff-created voter education videos
- Increased social media presence

Public Hearings

The Registrar of Voters plans to have the following public hearings as part of its compliance with the Voters Choice Act.

Date	Time	Location	Details
August 1, 2023	4:00 pm	Zoom	Accessibility Needs Public Consultation Meeting
August 10, 2023	4:00 pm	Zoom	Language Needs Public Consultation Meeting
August 29, 2023	4:00 pm	Zoom	Draft Election Administration Plan Public Hearing
December 14, 2023	4:00 pm	Zoom	General Voter Education Workshop
December 21, 2023	4:00 pm	Zoom	Accessibility Voter Education Workshop
December 28, 2023	4:00 pm	Zoom	Spanish Voter Education Workshop
January 4, 2024	4:00 pm	Zoom	Tagalog Voter Education Workshop
January 11, 2024	4:00 pm	Zoom	Mandarin Voter Education Workshop
January 18, 2024	4:00 pm	Zoom	Cantonese Voter Education Workshop
January 25, 2024	4:00 pm	Zoom	Vietnamese Voter Education Workshop
February 1, 2024	4:00 pm	Zoom	Korean Voter Education Workshop

2024 Messaging

Based on community feedback and input, the Registrar of Voters has established the following messaging points for the March 5, 2024 Presidential Primary Election that will be prevalent in all outreach and education materials.

- All voters will receive a Vote-by-Mail ballot
- Riverside County voters can vote in-person at any Vote Center
- The many ways voters have to easily cast their ballot
- Checking voter registration status to be “Voting Ready”

Community Partners

Successfully maintaining a community outreach program includes maintaining established partnerships with community-based groups and organizations throughout the county. The Registrar of Voters makes it a point to meet and communicate with dedicated individuals from various organizations across the county including advocacy groups, civic groups, chambers of commerce, youth groups, churches, political organizations and other individuals. A full list of community partners is included in the appendices section.

Voting Accessibility Advisory Committee (VAAC)

Created in 2015, the mission of the VAAC is to provide a forum where the community, particularly those who are elderly or those with disabilities, can advise and assist, voice concerns and provide recommendations to the Registrar of Voters. One outcome sought through these meetings is to find opportunities to ensure all in-person voting locations are equally accessible to all voters. Committee members provide expertise on situation accessibility needs, suggestions for potential procedural additions or changes and positive feedback on addressing accessibility standards and reaching out to voters with accessibility needs. These meetings are held quarterly and are open to the public.

Language Accessibility Advisory Committee (LAAC)

Created in 2013 originally as the Registrar of Voters' Community Outreach Group, the LAAC was expanded to its current form in early 2018. This citizen group was originally tasked with addressing accessibility in the Spanish language at polling places, but has grown to provide language access in all aspects of the operation, specifically assisting not only Spanish-speaking citizens, but also the needs of Riverside County's Korean, Chinese (Mandarin and Cantonese), Tagalog and Vietnamese speaking residents. The mission of the LAAC is to work with partners to ensure activities, program and policies are providing equal access to the ballot and relevant voting information. These meetings are held quarterly and are open to the public.

Voter Education Workshops

The Registrar of Voters will host multiple voter education workshops to provide information about Vote Centers and Ballot Drop-Off Locations for each of Riverside County's federal and state required languages. In 2023, these languages include Spanish, Vietnamese, Chinese (Mandarin and Cantonese), Korean and Tagalog. In addition, the Registrar of Voters will host a voter education workshop for the disability community.

Each workshop will include information about the new voting model, language assistance services, ballot drop-off options and a how-to on items such as requesting translated election materials, voting equipment overview, and audio voting. Workshop information will be announced at least 10 days in advance of meeting dates and shared with local language and accessibility partners to encourage citizen participation. Voters can locate additional information about the workshops on our website.

Methods to Identify Language Communities

The first tool that will be utilized is the county's Language Analysis process to determine which voting precincts have a certain threshold of voters who speak a language other than English and require translated ballots. Voters may also notify the Registrar of Voters if they have a language preference or request language assistance through voter registration forms. This data, along with the United States Census Bureau can help identify communities that have limited-English proficiency and language needs.

Community partners also actively provide the Registrar of Voters with input on where there are large swaths of language communities in Riverside County. The Registrar of Voters will team up with its community partners to determine the best number of workshops, workshop dates, preferred format for meetings and locations and what materials to distribute to best serve this voting community. The workshops will be announced at least 10 days in advance.

Remote Accessible Vote-by-Mail Outreach

The Registrar of Voters is developing a plan to inform voters about the availability and functionality of Remote Accessible Vote-by-Mail (RAVBM). Different strategies will be created based on the target audience and best practice on how to reach them. This program, which started in 2018, will be included in the department's overall media strategy to inform and engage voters leading up to the March 5, 2024 Presidential Primary Election.

High Schools

The Registrar of Voters is committed to fostering lifelong voters through actively working with Riverside County high schools to support their civics and government programs. The department provides voter registration cards and other support as an active participant in the Secretary of State's High School Voter Education Weeks program in September and April. The Registrar of Voters also encourages all eligible high school students to participate as poll workers on Election Day.

Colleges and Universities

The Registrar of Voters has its Registration, Outreach, Voting and Educational Resource, or ROVER, mobile community engagement unit and plans to update its look and use it as a resource to draw the attention of students, faculty, and staff.

Initial conversations have taken place to develop comprehensive marketing plans for colleges and universities and explore the possibility of hosting either a vote center or ballot drop-off box on campus. The Registrar of Voters has already used the University of California at Riverside and Moreno Valley College as in-person voting locations and ballot drop-off sites in recent years and planning efforts have already begun to have them continue as Vote Centers and/or Ballot Drop-Off Locations. The Registrar of Voters hopes to bring this opportunity to other potential college partners.

Business Partners

The Registrar of Voters plans to partner with business associations and chambers of commerce to provide speaking engagements, voter registration training and informational tabling at meetings.

Speaking Engagements and Community Events

Virtual Speaking Engagements

The speaking engagement component of Riverside County Registrar of Voters community outreach program is an integral part of outreaching to voters of many different backgrounds throughout Riverside County. Covering a diverse and expansive area, the program aims to achieve the following goals:

- Educate voters on the electoral process, including the evolution of Riverside's in-person voting to Vote Centers
- Provide information on special programs, online features and voter registration
- Network and pursue collaborative opportunities

The focus is to provide small and large-scale communication to the community. Virtual speaking engagements include attending various community meetings and events and conducting non-partisan, neutral and culturally sensitive presentations.

As many groups exist within Riverside County, virtual speaking engagements allow the Registrar of Voters to promote services, build partnerships and interact with various communities. Targeted groups include the following:

- Community groups
- Rotary Clubs
- Parent Teacher Associations
- Cultural Clubs
- Service organizations
- Faith-based organizations
- Churches
- Universities/Colleges
- Community Colleges

- Student organizations
- Non-profit organizations
- Senior citizen centers
- Citizenship classes
- Professional associations
- Public service agencies
- Workforce development agencies
- Youth groups

Community Events

To maintain a strong presence in the community, the Registrar of Voters plans to focus its community outreach attendance to both small-to-medium and large-scale events. The Registrar of Voters will be present at these events to provide information about the transition to the vote center model, voting options and other election information. Staff will interact and engage with the public, answer questions, facilitate demonstration of the ballot-marking devices used at Vote Centers and assist with filling out voter registration forms. Participating in these events provides the Registrar of Voters potential access to thousands of individuals throughout the county.

Elected Officials and Government Agencies

The Registrar of Voters will leverage existing working relationships with government agencies and elected officials to raise public awareness of the transition to vote centers. This partnership includes reaching out to all City Clerks to share information about the new voting method.

Community Engagement Suite

General Media Plan

Elections Code §4005(a)(10)(i)(I)

To inform Riverside County voters that the experience they had casting their ballot during the past two elections is now permanent, the Registrar of Voters plans to reach as many voters as possible. By using a blend of social media, direct mail, print, broadcast, radio, staff-created informational videos and press releases and

availability to generate news coverage, the department aims to saturate all consumable media platforms with information to create a more informed and engaged electorate.

Media Partners

Elections Codes §4005(a)(10)(l)(i)(II), §4005(a)(10)(l)(i)(VIII)

The Registrar of Voters will provide press releases, infographics, video content and social media content for mass distribution and publication to existing media partners and seek out other trusted media sources to help communicate messages to Riverside County voters about relevant changes to their voter experience. This includes accessibility options, how to request an accessible ballot, information about Vote Centers and Ballot Drop-Off Box Locations, key election dates and other election-specific news.

Additionally, Registrar of Voters Rebecca Spencer and Assistant Registrar of Voters Art Tinoco often appear on local media to speak as elections experts and give context to voters about what is happening when they cast their ballot.

Language Media Partners

Elections Code §4005(a)(10)(l)(i)(I)

Riverside County continues to see its communities become more diverse, which is reflected in the amount of language media outlets there are in the county. The Registrar of Voters has dedicated full-time staff members who serve as liaisons to larger language communities and brings on temporary staff members to meet that need in other language communities. The Registrar of Voters continues to actively work with all local language media partners. Information about the 2024 elections, the office's toll-free voter assistance hotline and increased options at Vote Centers to get language assistance will be shared with language media partners.

Direct Voter Contacts

Elections Code §4005(a)(10)(l)(i)(X)

The Registrar of Voters plans to send two direct mailers, along with the County's Voter Information Guide and a Vote-by-Mail ballot package in October to advise all

registered voters about the upcoming election. There will be some mention that the way voters have become accustomed to voting since the start of the COVID-19 global pandemic is now the voting method Riverside County will use going forward. The mailers will be designed to catch the voter's attention by using messaging geared toward the convenience of Vote Centers and voting by mail. Mailers will also provide information about when to expect election-specific items in the mail and other tips to assist voters.

Postage-Paid Postcard for Requesting Materials

Elections Code §4005(a)(8)(B)(iii)

All Riverside County registered voters will receive a postage-paid postcard in their Voter Information Guide to request election materials in alternate languages. Instructions for completing and returning the postcard will be included in the guide, as well as being featured on the Registrar of Voters website.

Public Service Announcements

Elections Codes §4005(a)(10)(I)(i)(VIII), §4005(a)(10)(I)(i)(IX)

There are a lot of opportunities to utilize traditional media outlets such as billboard advertisers, ads on bus stops and television commercial outlets who are willing to share government messages at little or no cost. The Registrar of Voters plans to aggressively seek out these opportunities to supplement paid advertisements. There will be a PSA targeted to English-speaking and non-English speaking voters. The PSA will inform voters of the upcoming elections and promote the toll-free voter hotline.

Additionally, the Registrar of Voters plans to continue to build upon its portfolio of staff-created videos to inform and educate voters about how to mark and return their Vote-by-Mail envelope, how to use the ballot-marking devices and other tutorials.

Social Media

The Registrar of Voters will use social media to attract new voters who may not otherwise be familiar with voting and provide information to existing voters about the changes to Vote Centers as well as updates on critical deadlines, events, voting tips and where to find their nearest place to vote in person. One benefit of social media

that Registrar of Voters staff looks to capitalize on is showing in real-time how many steps go into an election and the lengths staff goes through to ensure security. The Registrar of Voters main social media presence is on Facebook:

<https://www.facebook.com/profile.php?id=100066598594713>

Departmental Public Information Officer

Because of the specific needs of the Registrar of Voters office to reach out to Riverside County voters in a short amount of time, the department will hire a Public Information Officer to skillfully work with media and community partners to get the word out about the transition to the Voter's Choice Act.

Website

Elections Code §4005(a)(10)(I)(i)(IV)

The Registrar of Voters has completed the overhaul of its website. The Registrar of Voters has added an informational page about Riverside County's new voting method on its current website, www.voteinfo.net. This page includes the final version of the Election Administration Plan, methods to request an accessible Vote-by-Mail ballot and how to use it, lists of Vote Center and Ballot Drop-Off Box locations, and other Voters Choice Act information.

Projected Budget for Voter Outreach

The following table shows the advertising and voter outreach budgets for the 2020 - 2022 elections as well as the estimated budget for the March 2024 and November 2024 elections.

Elections	Advertising	Postcards	Outreach Events and Education Materials
March 2020 Vote Center	\$31,044	N/A	Not Tracked
November 2020 Vote Center	\$184,437	N/A	Not Tracked
September 2021 Vote Center	\$29,174.80	N/A	Not Tracked
June 2022 Vote Center	\$500,000	\$1,300,000	\$250,000

November 2022 Vote Center	\$500,000	\$1,300,000	\$250,000
March 2024 Vote Center	\$500,000	\$1,300,000	\$250,000
November 2024 Vote Center	\$500,000	\$1,300,000	\$250,000

Election Activities & Support

Logic & Accuracy Testing

All equipment will start to be configured for the March 2024 Election in January 2024 after the certified list of candidates is received from the Secretary of State. In accordance with state law, testing will be conducted to ensure that each piece of equipment is programmed accurately and captures the correct voter selections and tabulates them correctly. This testing of machine logic and accuracy is conducted on all ballot tabulators at the Registrar of Voters office used for counting ballots and all precinct scanners, ballot printers and ballot-marking devices sent out for use at Vote Centers.

This testing process is open to the public. A public demonstration showing that the equipment has been properly tested for service will be conducted approximately three weeks before Election Day.

Elections Materials & Resources

County Voter Information Guide

The Registrar of Voters produces a comprehensive County Voter Information Guide before each election. This guide, which includes an English and Spanish version, is generally mailed to all voters about 40 days before Election Day. This guide's primary function is that it includes a sample ballot for a voter's specific ballot type in the upcoming election. This guide will also include detailed information on the Vote-by-Mail process, a full list of Vote Center and Ballot Drop-Off Box locations, candidate statements, measure material and options for requesting a replacement VBM ballot packet. The Guide is available in both large-print and online formats. It also contains a postage-paid application on the back cover in case the voter chooses to update their contact information or update their language preference.

An accessible County Voter Information Guide is available on the Registrar of Voter website, www.voteinfo.net, starting 29 days before Election Day.

The State's Voter Information Guide is mailed separately by the Secretary of State's office. That guide includes information on statewide candidates and propositions and can be accessed online by visiting the Secretary of State's Elections page, www.sos.ca.gov/elections.

Vote-by-Mail Ballot Packet

Every registered voter in Riverside County will receive a Vote-by-Mail packet in the mail, which the Registrar of Voters office mails out starting 29 days before Election Day. This packet includes the voter's official ballot, a postage-paid return envelope, informational inserts and a voting instruction sheet that includes a peel off "I Voted" sticker. Election materials, like official ballots, are not forwarded by the US Postal Service, but rather they are returned to the Registrar of Voters for processing as undeliverable.

Voter Postcards

All registered voters will receive two postcards informing voters of the upcoming election and contact information. The first postcard will be mailed in January 2024 and the second postcard will be mailed before the 11-day Vote Centers open.

Registrar of Voters Website

Beginning 29 days before Election Day, the Registrar of Voters website will be updated with the following information:

- Voter Look-Up Tool, which allows any Riverside County voter to
 - Verify their voter registration information
 - Verify their voted ballot has been received by Riverside County
 - Find the nearest Vote Center to their residence
 - Access their County Voter Information Guide and accessible ballot
- Interactive Web maps for Vote Centers and Ballot Drop-Off Box Locations, including hours of operation, special instructions and directions
- Election Results

- Information on accessible voting options, including information on what is available at a Vote Center, Curbside Voting, Remote Accessible Vote-by-Mail and materials in accessible formats.

Phone/Relay Options

Voters may call (951) 486-7200, or the California Relay Service at 711 to obtain election information including Vote Center and Ballot Drop-Off Box locations.

Translation assistance is available for voters in many languages.

Inmate Vote by Mail Program

Our office provides services to inmates by using our Jail Inmate Vote by Mail Program. This is a process wherein the Registrar of Voters' Office coordinates with the Riverside County Sheriff's Office to ensure inmates can participate in voting in an election.

Within this process, ROV registers inmates, verifies current registration, and issues a ballot to eligible registered voters. The Sheriff's Office hand delivers the completed voter registration forms and Vote by Mail applications of inmates to the ROV office.

ROV processes the voter registration forms and Vote by Mail applications. The Sheriff's Office delivers the Vote by Mail Ballots to the inmates. The Sheriff's Office returns the voted ballots to the ROV office on or before Election Day.

Post-Election Activities

Canvass - Vote-by-Mail

Starting 20 days before Election Day, the Registrar of Voters begins processing returned Vote-by-Mail ballots, which includes the extraction and review of the official ballot from the Vote-by-Mail envelope. Ballots returned up to Monday afternoon before Election Day are included in the initial election night results released shortly after 8:00 pm.

Each returned Vote-by-Mail ballot envelope is processed through a mail sorter which sorts the ballot by voting precinct. This process takes a picture of the envelope with the voter's signature, which is uploaded into the department's election management system. Staff then compares the scanned signature image to the signature on file in the voter's registration or other supporting documentation. If a voter forgets to sign their return envelope or a signature does not match a voter file, a letter and form is sent to the voter to give them a chance to cure the discrepancy. Signatures that cannot be determined go through multiple levels of escalated review, with the Registrar of Voters making the final determination.

Once a signature is deemed valid, ballot envelopes are taken to the extraction room where, with the assistance of machines, staff extract the ballots from the identification envelopes. This ensures voter privacy and that all ballots are secret. After extraction, ballots are moved to the processing room where teams review the ballots for damage and prepare them for tabulation. Damaged ballots that will not run through the tabulators are reproduced by teams of two. They are logged in the quality control log with the original ballot.

After processing, ballot cards are then sent through the tabulators. Scanned images of ballots may be sent to adjudication where teams of two analyze the ballot images to determine voter intent by reviewing ambiguous marks, ovals not filled properly, mistakes and write-ins. All decisions made by the adjudication team are logged in the system and reviewed by a Supervisor.

After tabulation, the paper ballots are stored in precinct-specific boxes and move to a secure storage room under 24-hour surveillance cameras and may be reviewed at any time during the certification process. Any overflow boxes are stored in the secured on-site warehouse area near the ballot storage room. This area is securely caged and also monitored by video surveillance.

Canvass - Vote Centers

Each evening, the co-leads at each Vote Center location will return Vote-by-Mail ballot envelopes, all voted ballots, and all laptops and routers. Included with the voted ballots is a Ballot Statement that ensures chain-of-custody, any Conditional Voter Registration ballots and plastic envelopes that contain all spoiled ballots, surrendered Vote-by-Mail ballots and envelopes, and completed Voter Registration forms. No voter personal information or activation cards for the ballot-marking devices are left overnight at Vote Centers.

On Election Night, the Registrar of Voters will process all in-person ballots from the Vote Centers, including any ballots picked up from selected high-volume sites by Registrar of Voters teams during the day.

Conditional Voter Registration and provisional ballots cast at Vote Centers or the Registrar of Voters office are initially processed by confirming a voter's eligibility. Once confirmed, the voter's registration is updated and the ballot is extracted, processed and tabulated like all other ballots. These ballots are included in the final official results.

1 Percent Manual Tally

To ensure that the ballot scanners are tabulating correctly, the Registrar of Voters conducts a manual tally on 1 percent of all the voting precincts in Riverside County, including all Vote-by-Mail ballots and Vote Centers. Precincts are selected randomly the Thursday morning following Election Day by rolling dice. Additional precincts are later selected by the Registrar of Voters to ensure that all contests have been audited

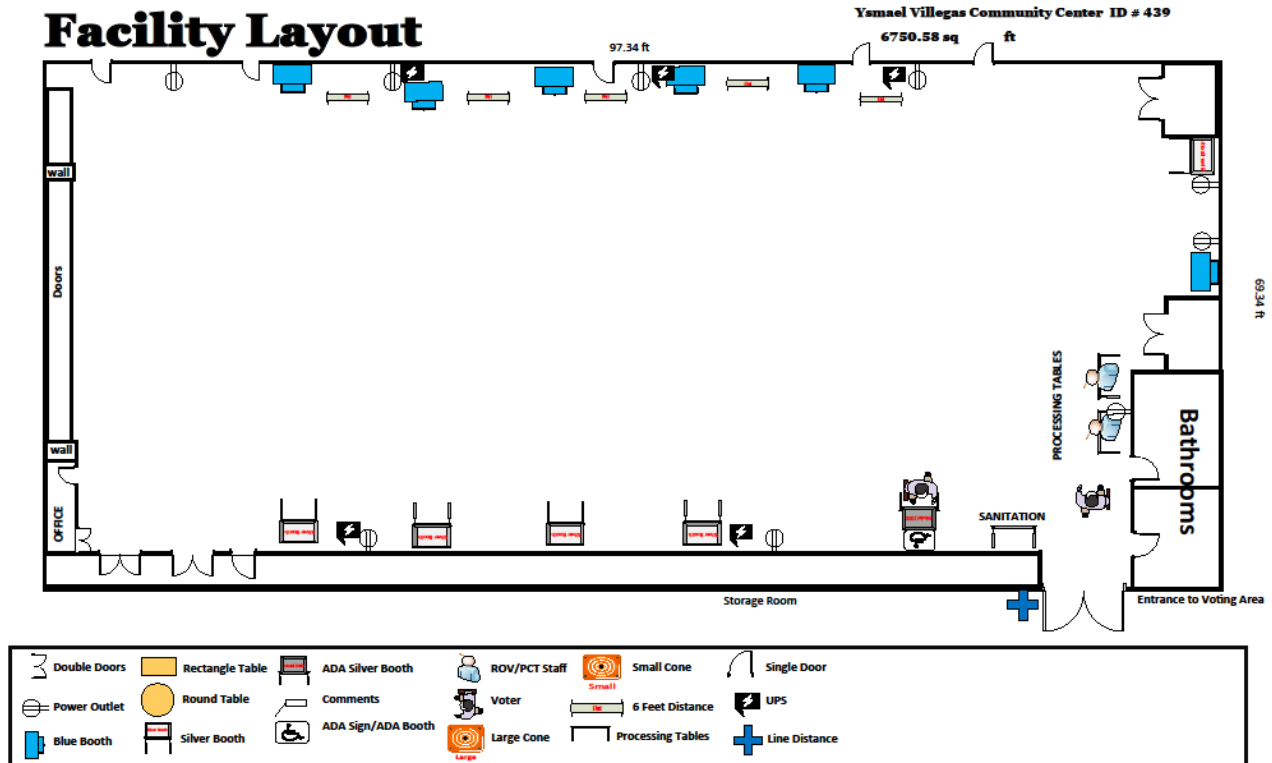
at least once. The public is encouraged to participate in the random selection and observe the process.

Appendices

Vote Center Layout

Each Vote Center will feature a similar layout, including a Sanitization Station with an assortment of PPE items, multiple check-in stations for voters to request to vote in person, 10 Accessible Voting Units for voters to securely make their selections and a scanner where voters will be able to cast their completed ballot.

Here is a diagram of the Ysmael Villegas Community Center in Riverside for the September 2021 Recall Election. This closely depicts what a typical Vote Center would look like.



Vote-by-Mail Posters

California Elections Code requires that all official county ballot drop-off locations have specific instructions to voters. Riverside County meets and exceeds these standards by affixing the below posters to each of its drop-off boxes. The posters include instructions in all of Riverside County’s mandated languages, including English, Spanish, Chinese (Mandarin), Korean, Tagalog and Vietnamese.

These posters are included on boxes at all City Clerk’s offices, boxes that are staffed with Registrar of Voters staff members and the permanent drop-off boxes outside the Registrar of Voters office that are open 24 hours a day during an election.

Vote-by-Mail Drop Off Site
Official Ballot Box

Tampering with the ballot drop box is a felony (Elections Code Section 18500).
No postage is necessary when depositing a ballot into the drop box.
Contact the County of Riverside Registrar of Voters' office in the event that the drop box is full, not functioning, or has been damaged.
No ballots will be accepted after 8:00 p.m. on Election Day, unless voters are in line or the time for closing of the polls has been extended by a court order.

Votación por Correo Sitio De Entrega
Urna Oficial Para Boletas

Manipulación de la urna electoral para entregar boletas es un crimen (Código de Elecciones Sección 18500).
No es necesario el franqueo al depositar una boleta en la urna electoral.
Comuníquese con la oficina del Registro de Votantes del Condado de Riverside en caso de que la urna electoral esté llena, no funcione o se haya dañado.
No se aceptarán boletas después de las 8:00 p.m. el Día de Elección, a menos que los votantes estén en línea o una orden judicial haya extendido el tiempo del cierre de las casillas.

Paghuhulugan ng Mga Balotang Ipinadala sa Pamamagitan ng Koreo
Opisyal na Kahon ng Balota

Labag sa batas ang patilalaim sa drop box ng balota (Elections Code, Section 18500).
Hindi kailangan ng selyo sa paghuhulug ng balota sa drop box.
Makipag-ugnayan sa tanggapan ng Registrar ng Mga Bolante ng County ng Riverside kung puno na, hindi gumagana, o sirang ang drop box.
Hindi na tatanggap ng mga balota pagkalipas ng 8:00 p.m. sa Araw ng Halalan, maliban na lang kung nasa pila na ang mga bolante o pinalawig ang oras ng pagasaara ng mga botohan sa pamamagitan ng isang kautusan ng hukuman.

Địa Điểm Bỏ Phiếu Bầu Qua Thư
Thùng Phiếu Chính Thức

Già mạo hộp bỏ phiếu bầu là hành vi trọng tội (Bộ Luật Bầu Cử Phần 18500).
Không mất bưu phí khi đặt phiếu bầu vào hộp bỏ phiếu.
Liên hệ với văn phòng Đăng Ký Danh Cho Cử Tri Quận Riverside nếu hộp bỏ phiếu đầy, không hoạt động hoặc bị hư hại.
Không chấp nhận phiếu bầu sau 8 giờ tối Ngày Bầu Cử, trừ khi cử tri đang xếp hàng bỏ phiếu hoặc thời gian kết thúc bỏ phiếu được gia hạn theo lệnh của tòa án.

邮寄投票投递站点
官方投票箱

乱动选票投递箱是重罪 (选举法第 18500条)。
在将选票投入投递箱时不需要邮资。
如果投递箱已满、故障或损坏，请联系河滨县选民登记员办公室。
选举日晚 8 点后将不再接受投票，除非是正在排队的选民或法院命令延长投票结束时间。

우편 투표 반납 장소
공식 투표함

투표함 조작은 중범죄입니다. - 선거법 조항 18500(Elections Code Section 18500)
투표함에 투표용지를 넣을 때 우표가 필요하지 않습니다.
투표함에 가득 찼거나 작동하지 않는 경우, 또는 손상된 경우에 러버시이트 카운티 유권자 등록 사무소에 연락하십시오.
투표지가 줄을 서 있는 상태이거나 투표 종료 시간이 벌엄 명령에 따라 연장되는 경우를 제외하고, 선거일 오후 8시 이후에는 투표용지를 받지 않습니다.

County of Riverside
Registrar of Voters

(951) 486-7200
(800) 773-VOTE (8683)
California Relay Service (Dial 711)
www.voteinfo.net





Vote-by-Mail Drop Off Site

See City Clerk for more information

Votación por Correo Sitio de Entrega

Para más información hable con el Secretario/a Municipal

Lugar ng Drop Off para sa Vote-by-Mail

(Pagboto sa pamamagitan ng Koreo)

Makipag-ugnayan sa City Clerk para sa higit pang impormasyon

Địa Điểm Bỏ Phiếu Bầu Qua Thư

Hãy gặp Thư Ký Thành Phố để biết thêm thông tin

邮寄投票投递站

联系市政厅职员以了解更多信息

우편 투표 제출 장소

자세한 정보는 시청 공무원에게 문의하시기 바랍니다

County of Riverside
Registrar of Voters

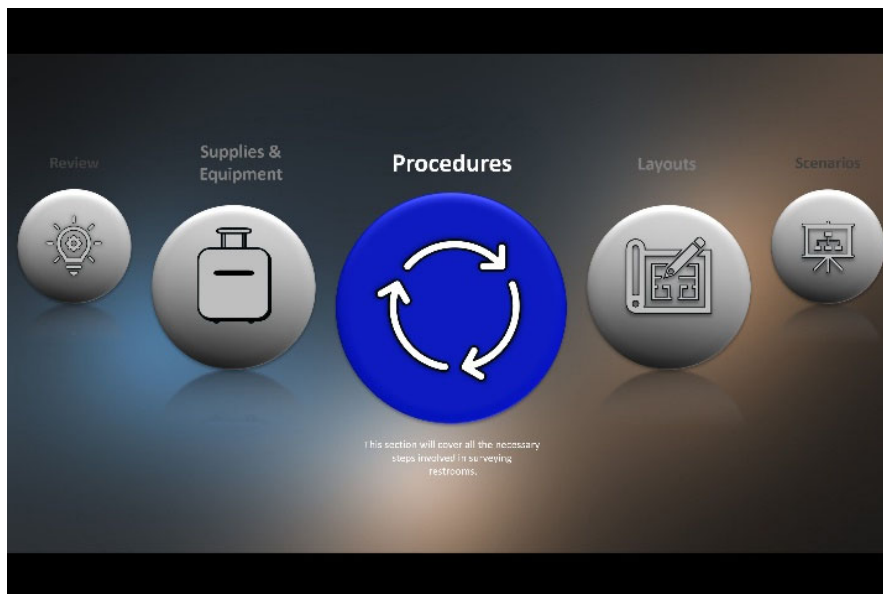
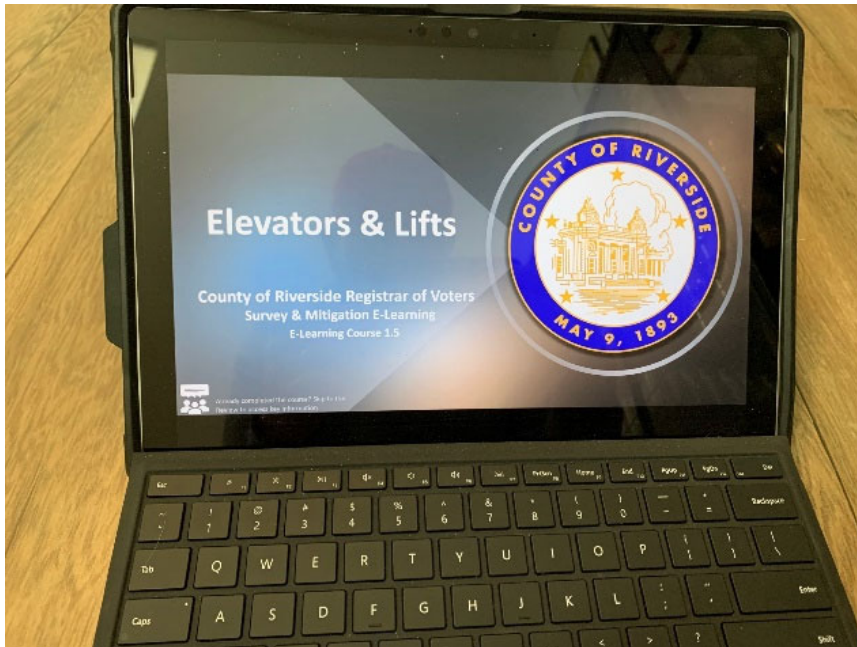
(951) 486-7200
(800) 773-VOTE (8683)
California Relay Service (Dial 711)
www.voteinfo.net



E-Module Learning for Surveys and Mitigation

The Registrar of Voters utilizes a new training module that was created internally by staff members to help create a more standardized approach to teaching newer employees on how to conduct site surveys and provide the proper mitigation to make all sites accessible.

Here are a couple of screenshots of this module.



Voting Accessibility Advisory Committee Meetings

Attached is a recent agenda and invitation letter for the Registrar of Voters' long-standing Voting Accessibility Advisory Committee. Meetings are open to the public and held on a quarterly basis.



Voting Accessibility Advisory Committee
Thursday, October 28, 2021
Time: 10:00 a.m.

AGENDA

- I. Introductions
- II. Approval of July 29, 2021 VAAC Minutes
- III. Recap of the 2021 Gubernatorial Recall Election
- IV. Update on the County's Possible VCA Implementation
- V. Discussion of the 2022 Election Timeline
- VI. Update on the SOS VAAC
- VII. Public Comments
- VIII. Adjournment/Next Meeting

Reminder: VAAC members can make suggestions by contacting our office 24 hours a day by calling (800) 773-VOTE (8683).

2720 Gateway Drive | Riverside, CA 92507-0918
Mailing Address: 2724 Gateway Drive | Riverside, CA 92507-0918
(951) 486-7200 | FAX (951) 486-7272 | California Relay Service (Dial 711)
www.voteinfo.net

REBECCA SPENCER
Registrar of Voters



ARTINOCO
Assistant Registrar of Voters

REGISTRAR OF VOTERS
COUNTY OF RIVERSIDE

October 20, 2021

RE: Local Voting Accessibility Advisory Committee – Meeting Notice

Dear Community Neighbors, Friends and VAAC Members:

You are cordially invited to attend the Riverside County Registrar of Voters Local Voting Accessibility Advisory Committee (VAAC) scheduled for Thursday, October 28, 2021 at 10AM. We will be conducting this meeting via teleconference using the Zoom video conferencing platform. A Courtesy reply is requested on or before **October 25, 2021**.

The VAAC is a forum for the disability and senior communities in Riverside County to voice their concerns, advise, assist, and provide recommendations to the Registrar of Voters regarding access to the electoral process for elderly voters and voters with disabilities. Julie Caban is the department's VAAC Chair and Larry Smith is the Co-Chair for the meetings. The VAAC is open to any interested person or organization. Meetings are held on a quarterly basis.

SEE ATTACHED VAAC MEETING SCHEDULE FOR ZOOM MEETING INFORMATION, DATE AND TIME.

The Registrar of Voters is highly interested in promoting awareness to individuals and organizations through outreach opportunities. VAAC members are encouraged to reach out to other members of the community and assist with disseminating voter materials as well as recruit potential poll workers from within their communities.

Your participation in these ongoing efforts is invaluable to the county's disability and senior communities. We encourage you to apply as a VAAC member or sincerely hope you will consider attending the upcoming VAAC meeting or appointing a representative.

Posting and/or distribution of this meeting notice to interested parties would be appreciated.

If you require further information, please call Julie Caban at (951) 486-7353 or Larry Smith at (951) 486-7202.

Sincerely,

Larry D. Smith
Elections Coordinator

Julie Caban
Elections Technician III

2720 Gateway Drive, Riverside, CA 92507-0918
Mailing Address: 2724 Gateway Drive, Riverside, CA 92507-0918
(951) 486-7200 • FAX (951) 486-7272 • California Relay Service (Dial 711)
www.voteinfo.net

Language Accessibility Advisory Committee Meetings

Attached is a recent agenda and invitation letter for the Registrar of Voters' long-standing Language Accessibility Advisory Committee. Meetings are open to the public and held on a quarterly basis.



Language Accessibility Advisory Committee
Thursday, October 28, 2021
Time: 2:00 p.m.

AGENDA

1. Welcome and Introductions
2. Purpose of Meeting
 - Enlist and discuss committee members, establish, and reinforce roles. Discuss Multi-languages, provide updates and progress.
3. Update on the September 14, 2021 – California Gubernatorial Recall Election
 - Total registered voters 1,293,611. Total votes cast 720,600
4. November 2, 2021 – Consolidated General Election (Polling Place)
 - Moreno Valley Unified School District, Trustee Area 4
 - City of Hemet, City Council, District 4
 - City of Moreno Valley, City Council, District 2
 - City of Riverside, Measure "C"
 - City of Indio, Measure, "E"
 - City of Moreno Valley, Measure, "G"
5. December 14, 2021, San Geronio Memorial Health Care District, Measure "H"
 - Special District Mail Ballot Election
 - Approximately 56,805 registered voters
6. Help Disseminate Special Language Election Materials.
 - Election Materials: LAAC packet information, LAAC committee member application, registration card holders, registration cards, LAAC meeting notice, Election Officer and Student Poll worker Applications to serve at the polls.
7. Questions/Comments

Reminder: LAAC members can make suggestions by contacting our office 24 hours a day by calling (800) 773-VOTE (8683).

REBECCA SPENCER
Registrar of Voters



ART TINOCO
Assistant Registrar of Voters

REGISTRAR OF VOTERS
COUNTY OF RIVERSIDE

October 19, 2021

RE: Local Language Accessibility Advisory Committee – Meeting Notice

Dear Community Neighbors, Friends and LAAC Members:

You are cordially invited to attend the Riverside County Registrar of Voters Language Accessibility Advisory Committee (LAAC) meeting scheduled for Thursday, October 28, 2021 at 2:00 p.m. We will be conducting this meeting using the Zoom video conferencing platform. A courtesy reply is requested on or before October 26, 2021.

The LAAC is a forum for limited English proficient (LEP) communities in Riverside County to voice their concerns, advise, assist, and provide recommendations to the Registrar of Voters regarding access to the electoral process for LEP voters. The LAAC is open to any interested person or organization. Meetings are held on a quarterly basis.

**SEE ATTACHED LAAC MEETING SCHEDULE FOR ZOOM MEETING
INFORMATION, DATE, AND TIME.**

The Registrar of Voters is highly interested in promoting awareness to individuals and organizations through outreach opportunities. LAAC members are encouraged to reach out to other members of the community and assist with disseminating voter materials as well as recruit potential poll workers from within their communities.

Your participation in these ongoing efforts is invaluable to the county's LEP communities. We encourage you to apply as a LAAC member or sincerely hope you will consider attending the upcoming LAAC meeting or appointing a representative.

Posting and/or distribution of this meeting notice to interested parties would be appreciated.

If you require further information or teleconferencing information, please call Carmen Mora at (951) 486-7208 or Leticia Flores at (951) 486-7212.

Sincerely,

Carmen Mora, Elections Technician III
Leticia Flores, Elections Coordinator

2720 Gateway Drive | Riverside, CA 92507-0921
Mailing Address: 2724 Gateway Drive | Riverside, CA 92507-0918
(951) 486-7200 | California Relay Service (Dial 711) | FAX (951) 486-7272
www.voteinfo.net

Community Partners

If you or your organization would like to partner with the Riverside County Registrar of Voters on Vote Center outreach and education, please visit the website

www.voteinfo.net/votecenter or email ROVWeb@rivco.org.

Language Community Partners

- Asian-Americans Advancing Justice - Los Angeles
- Hispanic Women Network
- LULAC
- Latino Network

Disability Community Partners

- Blindness Support Services
- Disability Rights California
- Community Access Center

Political, Advocacy and Professional Organizations

- Common Cause
- American Civil Liberties Union
- League of Women Voters
- National American Association of Colored People
- Riverside County Political Party Central Committees

Vote Center and Ballot Drop-Off Box Locations for 2022

The following pages contain a list of vote center and ballot drop-off locations for the November 2022 General Election.

VOTE CENTER LOCATIONS

Dates and hours vary - see below for more info.

Cottonwood Elementary School**	Library	44260 Sage Road	Aguanga, CA	92536
First Missionary Baptist Church*	Fellowship Hall	332 N Allen Street	Banning, CA	92220
Sun Lakes Country Club**	North Clubhouse	545 Twin Hills Drive	Banning, CA	92220
Albert Chatigny Community Center**	Gym	1310 Oak Valley Parkway	Beaumont, CA	92223
Beaumont Civic Center*	Gymnasium	550 E 6th Street	Beaumont, CA	92223
Elks Post 1839**	Lodge Room	1465 E 6th Street	Beaumont, CA	92223
Weaver Mortuary & Crematory**	Chapel	1177 Beaumont Avenue	Beaumont, CA	92223
Bermuda Dunes Community Service Center*	Multi-Purpose Room	78400 Forty Second Avenue	Bermuda Dunes, CA	92203
Zion Lutheran Church**	Multi-Purpose Room	721 E Chanslor Way	Blythe, CA	92225
Norton Younglove Senior Center**	Large Main Room	908 Park Avenue	Calimesa, CA	92320
Canyon Lake City Hall**	Meeting Room	31516 Railroad Canyon Road	Canyon Lake, CA	92587
Cathedral City Hall*	Study Session Room	68700 Avenida Lalo Guerrero	Cathedral City, CA	92234
Cathedral City Library**	Community Room	33520 Date Palm Drive	Cathedral City, CA	92234
Northgate Community Church**	Rooms 1, 2 & 3	30010 Date Palm Drive	Cathedral City, CA	92234
Riverside County Fire Station #22**	Bay Area	10055 Avenida Miravilla	Cherry Valley, CA	92223
Coachella Branch Library*	Program Room	1500 6th Street	Coachella, CA	92236
Coachella Community Center**	Bagdouma Park / Main Room	51251 Douma Street	Coachella, CA	92236
Circle City Center*	Game Room	365 N Main Street	Corona, CA	92880
Corona Public Library**	Francis Aldama Martinez Room	650 S Main Street	Corona, CA	92882
Corona Senior Center**	R & R Room	921 S Belle Avenue	Corona, CA	92882
Corona High School**	Theater Foyer	1150 W 10th Street	Corona, CA	92882
Covenant Life Christian Fellowship**	Crossover - Youth Center	211 East Sixth Street	Corona, CA	92879
Home Gardens Library**	Community Room	3785 S Neece Street	Corona, CA	92879
Islamic Society of Corona**	Multi-Purpose Room	465 Santana Way	Corona, CA	92881
Lee Pollard High School**	Lion's Den	185 Magnolia Avenue	Corona, CA	92879
Luiseno Elementary School**	Gymnasium	13500 Mountain Road	Corona, CA	92883
Peppermint Ridge*	Angel Hall	825 Magnolia Avenue	Corona, CA	92879
Santiago High School**	Theatre Foyer	1395 Foothill Parkway	Corona, CA	92881
Trilogy at Glen Ivy**	Pacific Crest Lodge - Lounge	24503 Trilogy Parkway	Corona, CA	92883
Desert Hot Springs Library*	Community Room	14380 Palm Drive	Desert Hot Springs, CA	92240
Desert Hot Springs Senior Center**	West Room	11777 West Drive	Desert Hot Springs, CA	92240
Eastvale City Hall**	City Council Chamber	12363 Limonite Avenue, Suite 910	Eastvale, CA	91752
Eleanor Roosevelt High School**	Library	7447 Scholar Way	Eastvale, CA	92880
Harada Neighborhood Center*	Activity Room C	13099 65th Street	Eastvale, CA	92880
Rosa Parks Elementary School**	Multi-Purpose Room	13830 Whispering Hills Drive	Eastvale, CA	92880
Bautista Creek Elementary School**	Multi-Purpose Room	441 N Lake Street	Hemet, CA	92544
Calvary Chapel Hemet**	Fellowship Hall	26121 Hemet Street	Hemet, CA	92544
Hemet DPSS**	Community Room	541 N San Jacinto Street	Hemet, CA	92543
Hemet Public Library*	Conference Room	300 E Latham Avenue	Hemet, CA	92543
Tahquitz High School**	Multi-Purpose Room	4425 Titan Trail	Hemet, CA	92545
Valle Vista Community Center**	Room 3	43935 Acacia Avenue	Hemet, CA	92544
West Valley High School**	A162 & A163	3401 Mustang Way	Hemet, CA	92545
Community First Church of God**	Fellowship Hall	31371 Highway 74	Homeland, CA	92548
Idyllwild Library**	Community Room	54401 Village Center Drive	Idyllwild, CA	92549
Indian Wells City Hall**	Council Chambers	44950 Eldorado Drive	Indian Wells, CA	92210
Desert Theatreworks**	Theatre	45175 Fargo Street	Indio, CA	92201
Indio Corporate Yard*	Lobby	83101 Avenue 45	Indio, CA	92201
Indio Library**	Community Room	200 Civic Center Mall	Indio, CA	92201
Riverside County Office of Education**	Conference Room 126 & 127	47110 Calhoun Street	Indio, CA	92201
Shadow Hills High School**	Gym Foyer	39225 Jefferson Street	Indio, CA	92203
California Family Life Center**	Gym	5656 Mission Boulevard	Jurupa Valley, CA	92509
Eddie Dee Smith Senior Center**	Event Room	5888 Mission Boulevard	Jurupa Valley, CA	92509
Glen Avon Library*	Community Room	9244 Galena Street	Jurupa Valley, CA	92509
Jurupa Community Center**	Community Room	4810 Pedley Road	Jurupa Valley, CA	92509
Riverside County Animal Services**	Training Center	6851 Van Buren Boulevard	Jurupa Valley, CA	92509
The Cove - Jurupa Aquatic Center**	Multi-Purpose Room	4310 Camino Real	Jurupa Valley, CA	92509
Colonel Mitchell Paige Middle School**	Multi-Purpose Room	43495 Palm Royale Drive	La Quinta, CA	92253
La Quinta City Hall*	Study Session Room	78495 Calle Tampico	La Quinta, CA	92253
Trilogy at La Quinta**	Mariposa Conference Room	60750 Trilogy Parkway	La Quinta, CA	92253
Canyon Lake Middle School**	Multi-Purpose Room	33005 Canyon Hills Road	Lake Elsinore, CA	92532
Lake Community Center*	Community Room	310 W Graham Avenue	Lake Elsinore, CA	92530
Lakeland Village Community Center**	Dance Room	16275 Grand Avenue	Lake Elsinore, CA	92530
Lakeside High School**	Library	32593 Riverside Drive	Lake Elsinore, CA	92530
Outlets at Lake Elsinore**	Building F, F154b	17600 Collier Avenue, Suite A100	Lake Elsinore, CA	92530

*October 29, 2022 - November 7, 2022, 9:00am - 5:00pm. Election Day, November 8, 2022, 7:00am - 8:00pm.

**November 5, 2022 - November 7, 2022, 9:00am - 5:00pm. Election Day, November 8, 2022, 7:00am - 8:00pm.

VOTE CENTER LOCATIONS

Dates and hours vary - see below for more info.

Mecca County Library**	Community Room	91260 Sixty Sixth Avenue	Mecca, CA	92254
Boulder Ridge Elementary School**	Multi-Purpose Room	27327 Junipero Road	Menifee, CA	92585
Calvary Chapel Romoland**	Overflow Room	27912 Adams Avenue	Menifee, CA	92585
Kay Ceniceros Senior Center**	North Annex	29995 Evans Road	Menifee, CA	92586
Menifee Library*	Community Room	28798 La Piedra Road	Menifee, CA	92584
Romoland Elementary School**	Multi-Purpose Room	25890 Antelope Road	Menifee, CA	92585
Sun City Civic Association**	Webb Hall	26850 Sun City Boulevard	Menifee, CA	92586
Sun City Library**	Community Room	26982 Cherry Hills Boulevard	Menifee, CA	92586
Bear Valley Elementary School**	Library	26125 Fir Avenue	Moreno Valley, CA	92555
Cottonwood Golf Center**	Meeting Room	13671 Frederick Street	Moreno Valley, CA	92553
CrossWord Christian Church*	Court / Gym	21401 Box Springs Road	Moreno Valley, CA	92557
Honey Hollow Elementary School**	Room 29	11765 Honey Hollow Drive	Moreno Valley, CA	92557
Lasselle Elementary School**	Multi-Purpose Room	26446 Krameria Avenue	Moreno Valley, CA	92555
Moreno Valley Senior Center**	Room 1 & 2	25075 Fir Avenue	Moreno Valley, CA	92553
Palm Middle School**	Library	11900 Slawson Avenue	Moreno Valley, CA	92557
Paso De Lago Homeowners Association**	Clubhouse / Ballroom	14900 Vinehill Street	Moreno Valley, CA	92553
Sunnymead Elementary School**	Library	24050 Dracaea Avenue	Moreno Valley, CA	92553
Towngate Elementary School**	Library A114	22480 Dracaea Avenue	Moreno Valley, CA	92553
Vista Heights Middle School**	Multi-Purpose Room	23049 Old Lake Drive	Moreno Valley, CA	92557
Alta Murrieta Elementary School**	Multi-Purpose Room	39475 Whitewood Road	Murrieta, CA	92563
Avaxat Elementary School**	Multi-Purpose Room	24300 Las Brisas Road	Murrieta, CA	92562
Cole Canyon Elementary School**	Multi-Purpose Room	23750 Via Alisol	Murrieta, CA	92562
Dorothy McElhinney Middle School**	Teacher Lounge	35125 Briggs Road	Murrieta, CA	92563
Fire Station #4*	Training Room	28155 Baxter Road	Murrieta, CA	92563
Monte Vista Elementary School**	Multi-Purpose Room	37420 Via Mira Mosa	Murrieta, CA	92563
Murrieta Public Library**	Community Room	24700 Adams Avenue	Murrieta, CA	92562
Riverside County Office of Education Murrieta Office**	Lobby	38670 Sky Canyon Drive #200	Murrieta, CA	92563
Tovashal Elementary School**	Multi-Purpose Room	23801 Saint Raphael Drive	Murrieta, CA	92562
Norco Community Center**	Game Room	3900 Acacia Avenue	Norco, CA	92860
Norco Library**	Community Room	3240 Hamner Avenue	Norco, CA	92860
Nuview Library**	Community Room	29990 Lakeview Avenue	Nuevo, CA	92567
Fountains at the Carlotta**	Town Center Auditorium	41505 Carlotta Drive	Palm Desert, CA	92211
Palm Desert Community Center**	Gymnasium	43900 San Pablo Avenue	Palm Desert, CA	92260
Palm Desert Greens*	Recreation Center	73750 Country Club Drive	Palm Desert, CA	92260
Portola Community Center**	Multi-Purpose Room	45480 Portola Avenue	Palm Desert, CA	92260
Demuth Community Center*	Gymnasium	3601 E Mesquite Avenue	Palm Springs, CA	92264
James O. Jessie Desert Highland Unity Center**	Gymnasium	480 W Tramview Road	Palm Springs, CA	92262
Palm Springs Public Library**	Learning Center	300 S Sunrise Way	Palm Springs, CA	92262
Bob Glass Gym*	Community Room	101 North D Street	Perris, CA	92570
Mead Valley Community Center**	Banquet Hall	21091 Rider Street	Perris, CA	92570
Perris DPSS**	Community Room	201 Redlands Avenue	Perris, CA	92571
Sky View Elementary School**	Multi-Purpose Room	625 Mildred Street	Perris, CA	92570
Triple Crown Elementary School**	Multi-Purpose Room	530 E Orange Avenue	Perris, CA	92571
Rancho Mirage Library**	Annenberg Room	71100 Highway 111	Rancho Mirage, CA	92270
The River**	A103	71800 Highway 111	Rancho Mirage, CA	92270
Arlanza Community Center**	Conference Room	7950 Philbin Avenue	Riverside, CA	92503
Arlington Library**	Community Room	9556 Magnolia Avenue	Riverside, CA	92503
Christian Life Center**	Fellowship Hall	9085 California Avenue	Riverside, CA	92503
Galleria at Tyler*		1299 Galleria at Tyler	Riverside, CA	92503
Highgrove Library**	Community Room	530 Center Street	Riverside, CA	92507
Janeet Goeske Senior Center**	Bob Buster Room	5257 Sierra Street	Riverside, CA	92504
Joyce Jackson Community Center**	Multi-Purpose Room	5505 Dewey Avenue	Riverside, CA	92504
La Sierra Community Center**	Multi-Purpose Room	5215 La Sierra Avenue	Riverside, CA	92505
Lake Mathews Community Room**	Community Room	16453 El Sobrante Road	Riverside, CA	92503
Lake Mathews Elementary School**	Multi-Purpose Room	12252 Blackburn Road	Riverside, CA	92503
Orange Terrace Community Center**	Ballroom	20010 Orange Terrace Parkway	Riverside, CA	92508
Orrenmaa Elementary School**	Room 29	3350 Fillmore Street	Riverside, CA	92503
Riverside County Office of Education*	Lobby	2100 E Alessandro Boulevard	Riverside, CA	92508
Riverside County Registrar of Voters***	Lobby	2720 Gateway Drive	Riverside, CA	92507
Riverside Main Library**	Community Room	3900 Mission Inn Avenue	Riverside, CA	92501
Springbrook Clubhouse**	Hall Way	1011 Orange Street	Riverside, CA	92501
SSgt. Salvador J. Lara Casa Blanca Library**	Community Center Room	2985 Madison Street	Riverside, CA	92504

*October 29, 2022 - November 7, 2022, 9:00am - 5:00pm. Election Day, November 8, 2022, 7:00am - 8:00pm.

**November 5, 2022 - November 7, 2022, 9:00am - 5:00pm. Election Day, November 8, 2022, 7:00am - 8:00pm.

***October 11, 2022 - November 7, 2022, Monday - Friday (excluding Holidays), 8:00am - 5:00pm; October 29, 2022 - October 30, 2022, 9:00am - 5:00pm; November 5, 2022 - November 6, 2022, 9:00am - 5:00pm; Election Day, November 8, 2022, 7:00am - 8:00pm.

VOTE CENTER LOCATIONS

Dates and hours vary - see below for more info.

University of California Riverside - UCR**	Alumni Dining Room	3701 Canyon Crest Drive	Riverside, CA	92507
Woodcrest Library**	Community Room	16625 Krameria Avenue	Riverside, CA	92504
Ysmael Villegas Community Center**	Dance Room	3091 Esperanza Street	Riverside, CA	92504
Mountain View Alternative High School**	Gym	1000 N Ramona Boulevard	San Jacinto, CA	92582
San Jacinto Community Center**	Lobby	625 S Pico Street	San Jacinto, CA	92583
Valley Wide Recreation & Park District*	Game Room	901 W Esplanade Avenue	San Jacinto, CA	92582
Jefferson Recreation Center**	Main Classroom	41375 McCabe Court	Temecula, CA	92590
MSJC Temecula Valley Campus**	Dining Area / Cafe	41888 Motor Car Parkway	Temecula, CA	92591
Promenade Temecula*		40820 Winchester Road	Temecula, CA	92591
Riverside County Fire Station 96**	Bay Area	37700 Glen Oaks Road	Temecula, CA	92592
Temecula Community Center**	Multi-Purpose Room	28816 Pujol Street	Temecula, CA	92590
Temecula Middle School**	Classroom 904 & 905	42075 Meadows Parkway	Temecula, CA	92592
Temecula Public Library**	Foyer	30600 Pauba Road	Temecula, CA	92592
Vail Ranch Middle School**	Multi-Purpose Room	33340 Camino Piedra Rojo	Temecula, CA	92592
Jack Ivey Ranch HOA**	Clubhouse Library	74580 Varner Road	Thousand Palms, CA	92276
VFW Post 1508**	Meeting Hall	21180 Waite Street	Wildomar, CA	92595
Wildomar City Hall*	Council Chambers	23873 Clinton Keith Road	Wildomar, CA	92595
Wildomar Library**	Community Room	34303 Mission Trail	Wildomar, CA	92595
Francis Domenigoni Community Center**	Gymnasium	32665 Haddock Street	Winchester, CA	92596
Susan LaVorgna Elementary School**	Assistant Principal's Office	31777 Algarve Avenue	Winchester, CA	92596

*October 29, 2022 - November 7, 2022, 9:00am - 5:00pm. Election Day, November 8, 2022, 7:00am - 8:00pm.

**November 5, 2022 - November 7, 2022, 9:00am - 5:00pm. Election Day, November 8, 2022, 7:00am - 8:00pm.

BALLOT DROP-OFF LOCATIONS

Dates and hours vary - see below for more info.

City of Banning**	99 E Ramsey Street	Banning, CA	92220
Albert Chatigny Community Center*	1310 Oak Valley Parkway	Beaumont, CA	92223
City of Beaumont**	550 E 6th Street	Beaumont, CA	92223
Bermuda Dunes Community Service Center*	78400 Forty Second Avenue	Bermuda Dunes, CA	92203
City of Blythe**	235 N Broadway	Blythe, CA	92225
City of Calimesa**	908 Park Avenue	Calimesa, CA	92320
City of Canyon Lake**	31516 Railroad Canyon Road	Canyon Lake, CA	92587
Cathedral City Library*	33520 Date Palm Drive	Cathedral City, CA	92234
City of Cathedral City**	68700 Avenida Lalo Guerrero	Cathedral City, CA	92234
City of Coachella**	53462 Enterprise Way	Coachella, CA	92236
Circle City Center*	365 N Main Street	Corona, CA	92880
City of Corona**	400 S Vicentia Avenue	Corona, CA	92882
Corona High School*	1150 W 10th Street	Corona, CA	92882
Corona Public Library*	650 S Main Street	Corona, CA	92882
Corona Senior Center*	921 S Belle Avenue	Corona, CA	92882
Covenant Life Christian Fellowship*	211 E 6th Street	Corona, CA	92879
Home Gardens Library*	3785 S Neece Street	Corona, CA	92879
Islamic Society of Corona*	465 Santana Way	Corona, CA	92881
City of Desert Hot Springs**	11999 Palm Drive	Desert Hot Springs, CA	92240
City of Eastvale**	12363 Limonite Avenue, Suite 910	Eastvale, CA	91752
Eastvale Community Center*	13820 Schleisman Road	Eastvale, CA	92880
Harada Neighborhood Center*	13099 65th Street	Eastvale, CA	92880
Center for Spiritual Living*	40450 Stetson Avenue	Hemet, CA	92544
City of Hemet**	445 E Florida Avenue	Hemet, CA	92543
Hemet DPSS*	541 N San Jacinto Street	Hemet, CA	92543
Hemet Public Library*	300 E Latham Avenue	Hemet, CA	92543
Valle Vista Community Center*	43935 Acacia Avenue	Hemet, CA	92544
Idyllwild County Library*	54401 Village Center Drive	Idyllwild, CA	92549
City of Indian Wells**	44950 Eldorado Drive	Indian Wells, CA	92210
City of Indio**	100 Civic Center Mall	Indio, CA	92201
Desert Theatreworks*	45175 Fargo Street	Indio, CA	92201
Indio Community Center*	45871 Clinton Street	Indio, CA	92201
City of Jurupa Valley**	8930 Limonite Avenue	Jurupa Valley, CA	92509
Eddie Dee Smith Senior Center*	5888 Mission Boulevard	Jurupa Valley, CA	92509
Glen Avon Library*	9244 Galena Street	Jurupa Valley, CA	92509
La Quinta City Hall**	78495 Calle Tampico	La Quinta, CA	92253
Trilogy at La Quinta*	60750 Trilogy Parkway	La Quinta, CA	92253
City of Lake Elsinore**	130 S Main Street	Lake Elsinore, CA	92530
Lakeland Village Community Center*	16275 Grand Avenue	Lake Elsinore, CA	92530
Outlets at Lake Elsinore*	17600 Collier Avenue, Suite A100	Lake Elsinore, CA	92530
Mecca Library*	91260 Sixty Sixth Avenue	Mecca, CA	92254
City of Menifee**	29844 Haun Road	Menifee, CA	92586

*October 11 - November 7, 2022, Monday - Friday (excluding Holidays), 10:00am to 3:00pm; and Election Day, November 8, 2022, 7:00am to 8:00pm.

**October 11 - November 7, 2022, during regular city business hours; and Election Day, November 8, 2022, 7:00am to 8:00pm.

BALLOT DROP-OFF LOCATIONS

Dates and hours vary - see below for more info.

Marion V. Ashley Community Center*	25625 Briggs Road	Menifee, CA	92585
Menifee Library*	28798 La Piedra Road	Menifee, CA	92584
Sun City Library*	26982 Cherry Hills Boulevard	Menifee, CA	92586
Cottonwood Golf Center*	13671 Frederick Street	Moreno Valley, CA	92553
CrossWord Christian Church*	21401 Box Springs Road	Moreno Valley, CA	92557
Moreno Valley DPSS*	12625 Heacock Street	Moreno Valley, CA	92553
Moreno Valley Senior Center*	25075 Fir Avenue	Moreno Valley, CA	92553
Paso De Lago Homeowners Association*	14900 Vinehill Street	Moreno Valley, CA	92553
Vista Heights Middle School*	23049 Old Lake Road	Moreno Valley, CA	92557
City of Moreno Valley**	14177 Frederick Street	Moreno Valley, CA	92553
City of Murrieta**	1 Town Square	Murrieta, CA	92562
Fire Station #4*	28155 Baxter Road	Murrieta, CA	92563
Monte Vista Elementary School*	37420 Via Mira Mosa	Murrieta, CA	92563
Murrieta Public Library*	24700 Adams Avenue	Murrieta, CA	92562
City of Norco**	2870 Clark Avenue	Norco, CA	92860
City of Palm Desert**	73510 Fred Waring Drive	Palm Desert, CA	92260
Palm Desert Community Center*	43900 San Pablo Avenue	Palm Desert, CA	92260
City of Palm Springs**	3200 E Tahquitz Canyon Way	Palm Springs, CA	92262
James O. Jessie Desert Highland Unity Center*	480 W Tramview Road	Palm Springs, CA	92262
City of Perris**	101 North D Street	Perris, CA	92570
Mead Valley Community Center*	21091 Rider Street	Perris, CA	92570
Perris DPSS*	201 Redlands Avenue	Perris, CA	92571
City of Rancho Mirage**	69825 Highway 111	Rancho Mirage, CA	92270
Arlanza Community Center*	7950 Philbin Avenue	Riverside, CA	92503
Highgrove Library*	530 Center Street	Riverside, CA	92507
Joyce Jackson Community Center*	5505 Dewey Avenue	Riverside, CA	92504
Marcy Branch Library*	6927 Magnolia Avenue	Riverside, CA	92506
Orange Terrace Community Center*	20010 Orange Terrace Parkway	Riverside, CA	92508
Renck Community Center*	4015 Jackson Street	Riverside, CA	92503
Riverside County Office of Education*	2100 E Alessandro Boulevard	Riverside, CA	92508
Riverside County Registrar of Voters***	2720 Gateway Drive	Riverside, CA	92507
Springbrook Clubhouse*	1011 Orange Street	Riverside, CA	92501
SSgt. Salvador J. Lara Casa Blanca Library*	2985 Madison Street	Riverside, CA	92504
Stratton Community Center*	2008 Martin Luther King Boulevard	Riverside, CA	92507
Woodcrest Library*	16625 Krameria Avenue	Riverside, CA	92504
City of Riverside**	3900 Main Street, 7th Floor	Riverside, CA	92501
City of San Jacinto**	595 S San Jacinto Avenue	San Jacinto, CA	92583
Valley Wide Recreation & Park District*	901 W Esplanade Avenue	San Jacinto, CA	92582
City of Temecula**	41000 Main Street	Temecula, CA	92590
Promenade Temecula*	40820 Winchester Road	Temecula, CA	92591
Temecula Community Center*	28816 Pujol Street	Temecula, CA	92590
Temecula Public Library*	30600 Pauba Road	Temecula, CA	92592
Coachella Valley Animal Campus*	72050 Pet Land Place	Thousand Palms, CA	92276
City of Wildomar**	23873 Clinton Keith Road, Suite 110	Wildomar, CA	92595
Francis Domenigoni Community Center*	32665 Haddock Street	Winchester, CA	92596

*October 11 - November 7, 2022, Monday - Friday (excluding Holidays), 10:00am to 3:00pm; and Election Day, November 8, 2022, 7:00am to 8:00pm.

**October 11 - November 7, 2022, during regular city business hours; and Election Day, November 8, 2022, 7:00am to 8:00pm.

***The Riverside County Registrar of Voters office ballot drop box is available 24/7 starting October 11, 2022.

R.O.V.E.R.

The Registrar of Voters' Registration, Outreach, Voting and Educational Resource, or ROVER, mobile community engagement unit. This vehicle serves as a resource for voter education and a voting venue in case of emergency or disaster impacting Election Day.



Riverside County Media Outlets

A key component of reaching out to Riverside County citizens alerting them about the county's final move to the Voters Choice Act is working with our media partners to help promote the work being done at the Registrar of Voters office. Here is a list of local media outlets as provided by the County's Public Information team.

Eastern Riverside County

Alpha Media
Associated Press
Banning Record Gazette
Desert Newsletter
Desert Review
Desert Sun
Idyllwild Town Crier
Imperial Valley Press/Adelante Valle
InlandEmpire.US
KESQ News Channel 3
KESQ-TV/CBS-Local 2/KDFX-TV/KUNA-TV
KJMB FM 100. 3
KNBC News
KPCC/SoCal Public Radio/LAist
Palo Verde Valley Times/Quartzsite Times
Uken Report
Valley News/Village News/Anza Valley Outlook/Reeder Media
KUNA
Univision Palm Springs

Western Riverside County

Print Media

Associated Press
Black Voice News
Bugle, The - Temecula/Murrieta/Elsinore
City News Service
High County Journal
Idyllwild Town Crier
Inland Living/Riverside Magazines/Sun/Daily Bulletin
Inland News Today/Inland Empire News Radio
InlandEmpire.US
Los Angeles Times
Patch RivCo Editions
Precinct Reporter

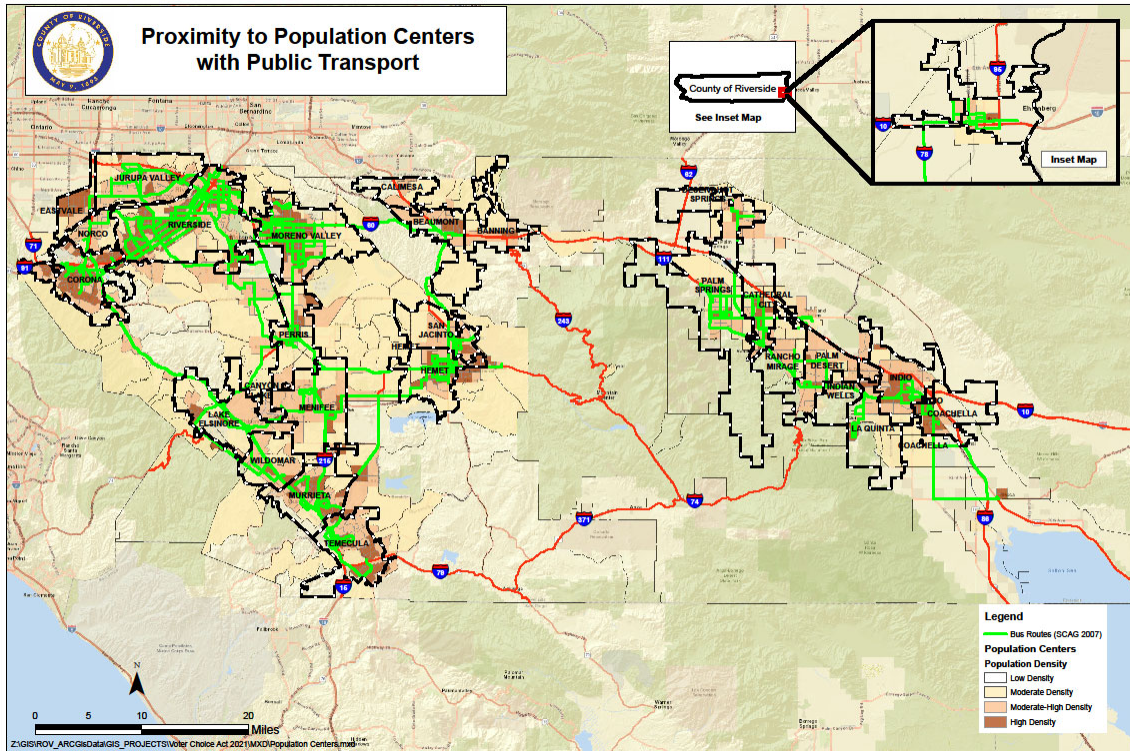
Press Enterprise
Record Gazette
Redlands Daily Facts
Riverside County Record
San Bernardino American News
San Jacinto Valley Sentinel
Sentinel Weekly News
Sun
Sun/Inland Valley Daily Bulletin
Valley Business Journal, The
Valley Chronicle, The - Hemet
Valley Messenger, The
Valley News/Village News/Anza Valley Outlook/Reeder Media
Westside Story Newspaper
Yucaipa/Calimesa News Mirror
La Prensa

Television and Radio

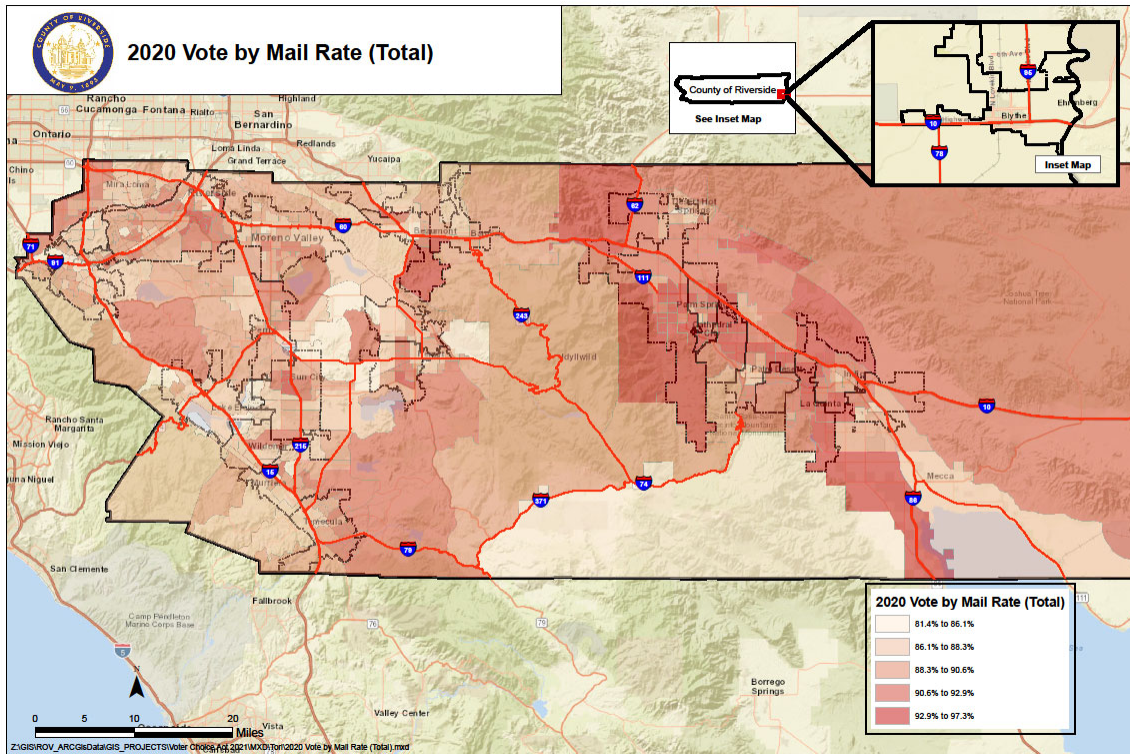
ABC7 KABC-TV
CBS2 KCAL9 KNX 1070
Inland News Today/Inland Empire News Radio
KATY 101.3 The Mix
KCAA 1050 AM 106. 5 FM 106. 3 FM
KESQ NEWS CH. 3ABC CBS Local 2 KDFX KUNA
KESQ News Channel 3
KFI Radio
KFRG 92. 9/95. 1
KHTI Hot 103.9
KNBC Channel 4
KNX 1070 Newsradio
KOLA 99.9FM
KPCC/LAist
KSXB 105.7
KTIE 590 AM Newstalk Radio
KTLA Chanel 5
KVCR
KVEA/KWHY Channels 52 and 22

Voter's Choice Act Criteria Maps

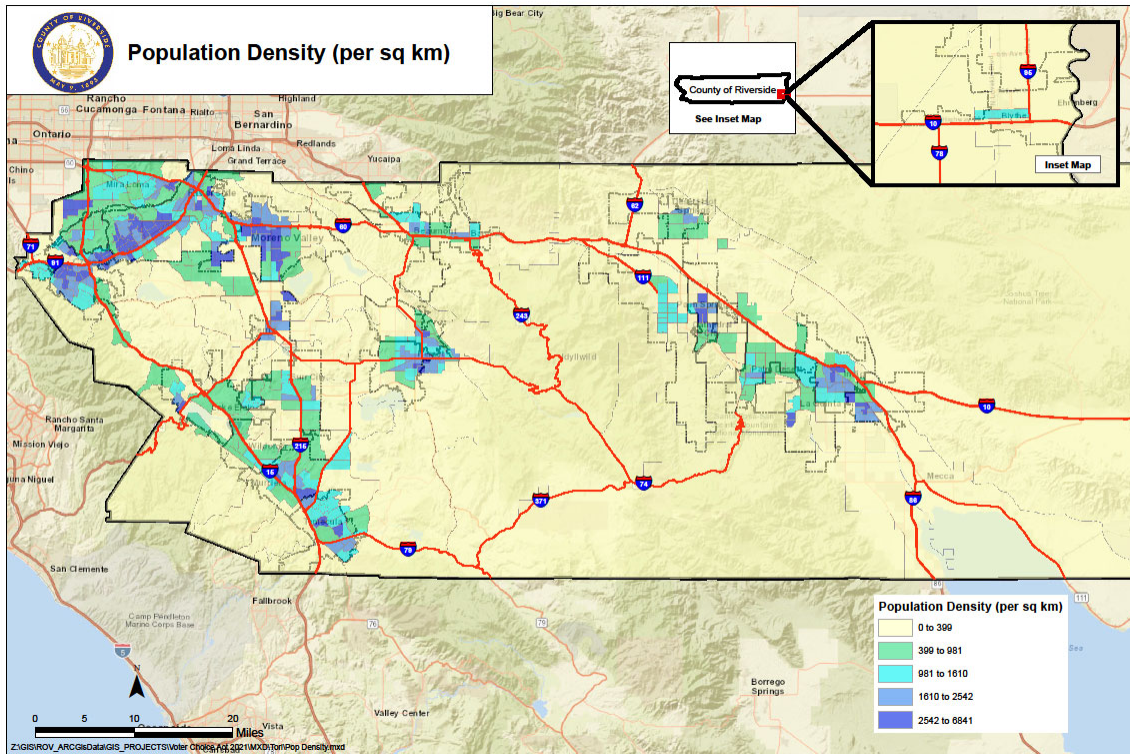
Public Transit Routes



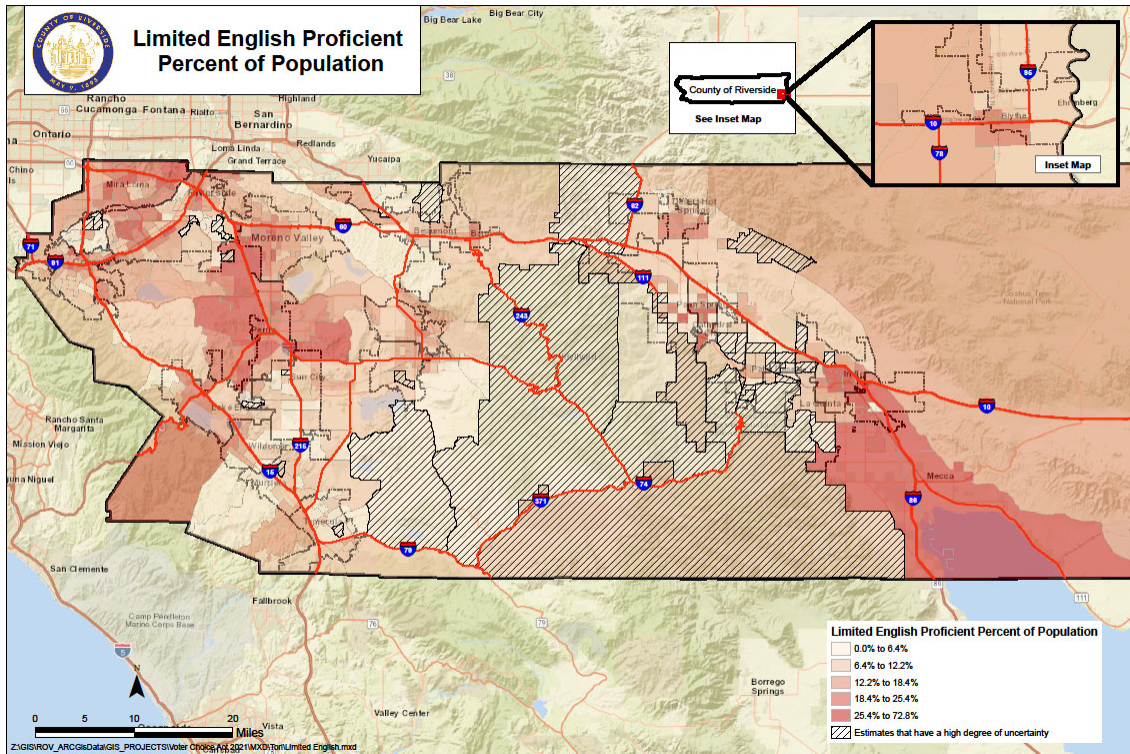
Areas with Low Vote-by-Mail Usage



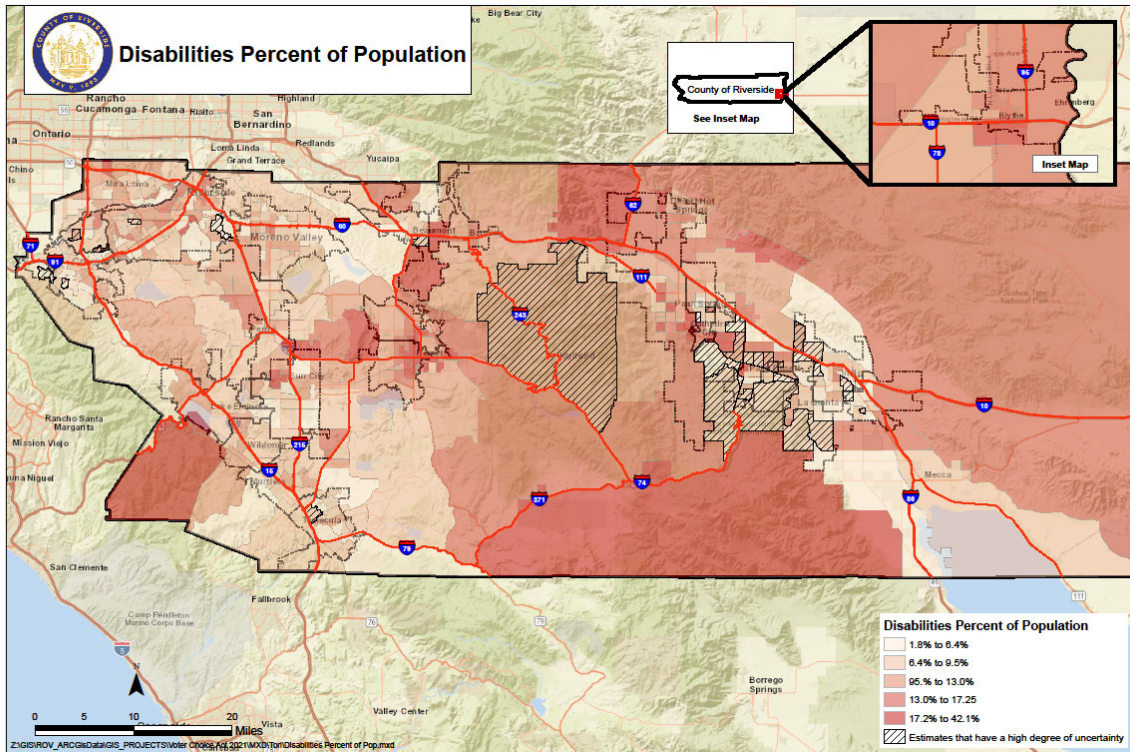
Population Density



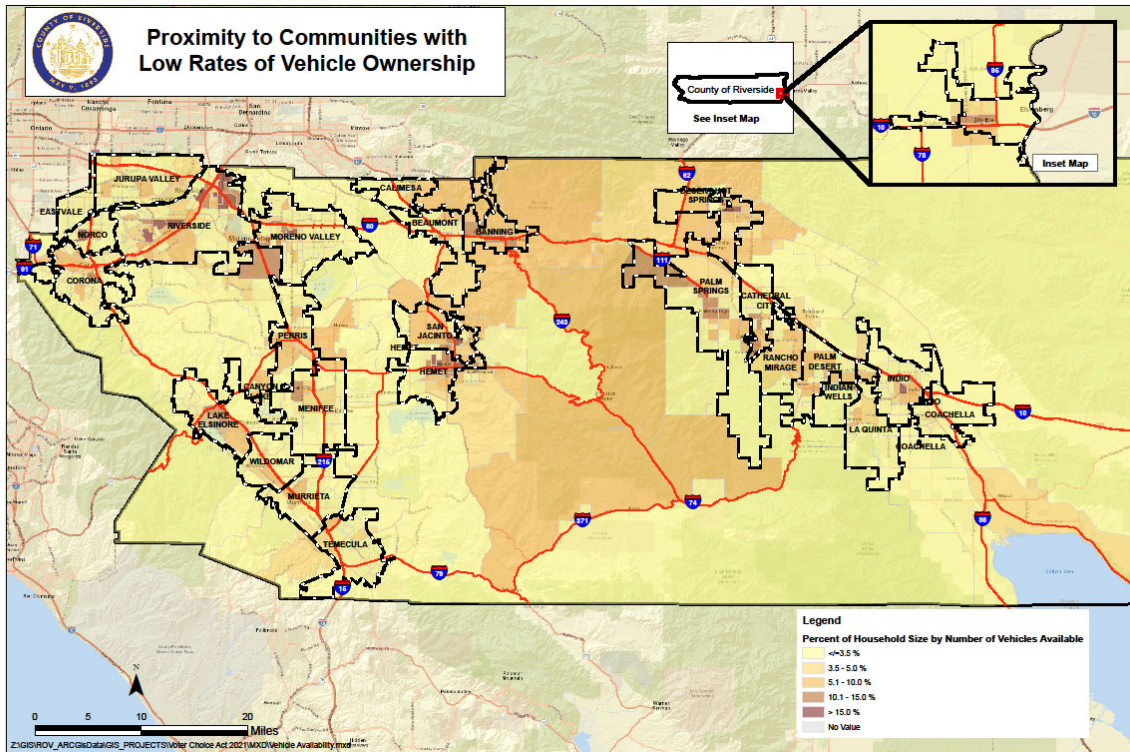
Language Communities



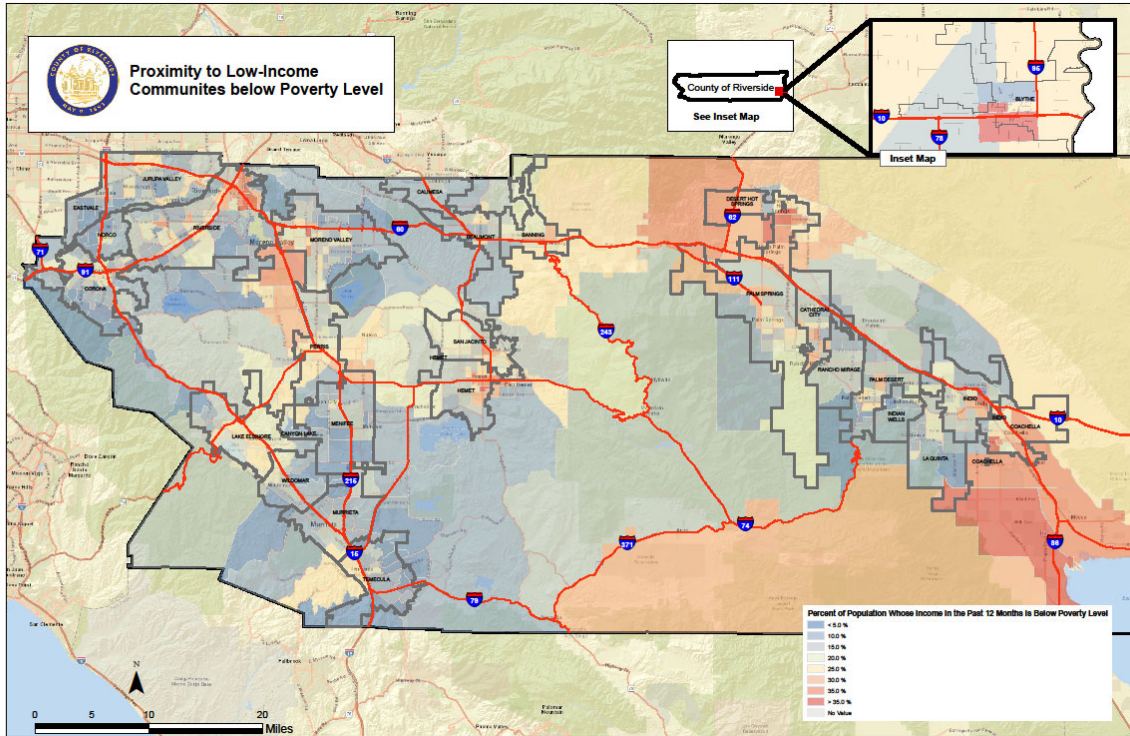
Voters with Disabilities



Low Household Vehicle Ownership



Low-Income Communities



Areas with Eligible Residents Who are Not Yet Registered to Vote

